

# Emerging priorities in terrestrial herbivory research in the Arctic

Isabel C. Barrio <sup>ib,a</sup>, Katariina E.M. Vuorinen <sup>ib,b</sup>, Laura Barbero-Palacios <sup>ib,c</sup>, Mathilde Defourneaux <sup>ib,a</sup>, Matteo Petit Bon <sup>ib,d</sup>, Eleanor A. Greer <sup>ib,a</sup>, Helen B. Anderson <sup>ib,e</sup>, Tim Horstkotte <sup>ib,f</sup>, Nicolas Lecomte <sup>ib,g</sup>, Torben Windirsch <sup>ib,h,i</sup>, Kristy Ferraro <sup>ib,j,k</sup>, Bruce C. Forbes <sup>ib,l</sup>, Jennifer S. Forbey <sup>ib,m</sup>, Mariana García Criado <sup>ib,n</sup>, Liyenne Hagenberg <sup>ib,f</sup>, David S. Hik <sup>ib,o,p</sup>, Ilona Kater <sup>ib,q,r</sup>, Petr Macek <sup>ib,s,t</sup>, Jon Moen <sup>ib,f</sup>, Maja K. Sundqvist <sup>ib,u</sup>, Jerzy Szejgis <sup>ib,u</sup>, Miguel Villoslada <sup>ib,v,w</sup>, Erica Zaja <sup>ib,x</sup>, Fanny Berthelot <sup>ib,y</sup>, Katrín Björnsdóttir <sup>ib,z,aa</sup>, Johannes Cunow <sup>ib,f</sup>, Michael den Herder <sup>ib,bb</sup>, Anu Eskelinen <sup>ib,cc</sup>, Katherine Hayes <sup>ib,dd</sup>, Robert D. Hollister <sup>ib,ee</sup>, Kolbrún í Haraldsstovu <sup>ib,ff</sup>, Ingibjörg Svala Jónsdóttir <sup>ib,gg</sup>, Jeppe A. Kristensen <sup>ib,hh,ii</sup>, Thomas K. Lameris <sup>ib,ii</sup>, Lauri Oksanen <sup>ib,y,kk</sup>, Tarja Oksanen <sup>y,kk</sup>, Johan Olofsson <sup>ib,f</sup>, Taejin Park <sup>ib,ll,mm</sup>, Áshild Ø. Pedersen <sup>ib,nn</sup>, Juan Ignacio Ramirez <sup>ib,y</sup>, Virve T. Ravolainen <sup>ib,nn</sup>, Austin Roy <sup>ib,oo</sup>, Ingvild Ryde <sup>ib,gg</sup>, Niels Martin Schmidt <sup>ib,pp</sup>, Benedikt Schrofner-Brunner <sup>ib,qq</sup>, Anna Skarin <sup>ib,rr</sup>, James D.M. Speed <sup>ib,ss</sup>, Mariska te Beest <sup>ib,tt,uu</sup>, Mikaela Simmonds <sup>ib,y,vv</sup>, Rita T. Torres <sup>ib,ww</sup>, Wolfgang Traylor <sup>ib,xx</sup>, Risto Virtanen <sup>ib,cc</sup>, Helen C. Wheeler <sup>ib,yy</sup>, Juha M. Alatalo <sup>ib,zz</sup>, Jan C. Axmacher <sup>ib,aaa</sup>, Jordi Bartolomé Filella <sup>ib,bbb</sup>, Elisabeth J. Cooper <sup>ib,y</sup>, Sonya R. Geange <sup>ib,ccc,ddd</sup>, Olivier Gilg <sup>ib,eee,fff</sup>, Paul Grogan <sup>ib,ggg</sup>, Carlos Hernández-Castellano <sup>ib,hhh,iii</sup>, Toke T. Høye <sup>ib,pp</sup>, Jeffrey T. Kerby <sup>ib,q,iii</sup>, Kari Klanderud <sup>ib,kkk</sup>, Amanda M. Koltz <sup>ib,lll</sup>, Johannes Lang <sup>ib,fff,mmm</sup>, Mathilde Le Moullec <sup>ib,c</sup>, Maarten J.J.E. Loonen <sup>ib,nnn,ooo</sup>, Marc Macias-Fauria <sup>ib,q</sup>, Eric Post <sup>ib,ppp</sup>, Emmanuel Serrano <sup>ib,hhh</sup>, Matthias Siewert <sup>ib,f</sup>, Aleksandr Sokolov <sup>ib,qqq</sup>, Natalia Sokolova <sup>ib,qqq</sup>, Otso Suominen <sup>ib,rrr</sup>, Mariana Tamayo <sup>ib,gg</sup>, Alexandra Terekhina <sup>ib,qqq</sup>, Alexander Volkovitskiy <sup>ib,qqq</sup>, and Stefaniya Kamenova <sup>ib,sss,ttt</sup>

<sup>a</sup>Faculty of Environmental and Forest Sciences, Agricultural University of Iceland, Reykjavík, Iceland; <sup>b</sup>Norwegian Institute for Nature Research (NINA), Lillehammer, Norway; <sup>c</sup>Greenland Institute of Natural Resources, Department of Birds and Mammals, Nuuk, Greenland; <sup>d</sup>Department of Wildland Resources | Quinney College of Natural Resources and Ecology Center, Utah State University, Logan, UT, USA; <sup>e</sup>Department of Rural Land Use, SRUC—Scotland's Rural College, Aberdeen, Scotland, UK; <sup>f</sup>Department of Ecology and Environmental Science, Umeå University, Umeå, Sweden; <sup>g</sup>Département de Biologie, Université de Moncton, Moncton, NB, Canada; <sup>h</sup>Research Institute for Sustainability Helmholtz Centre Potsdam, Potsdam, Germany; <sup>i</sup>Permafrost Research Section, Alfred Wegener Institute Helmholtz Centre for Polar and Marine Research, Potsdam, Germany; <sup>j</sup>Yale School of the Environment, New Haven, CT, USA; <sup>k</sup>Department of Biology, Memorial University, St. John's, Newfoundland, Canada; <sup>l</sup>Arctic Centre, University of Lapland, Rovaniemi, Finland; <sup>m</sup>Boise State University, Boise, ID, USA; <sup>n</sup>School of Geosciences, The University of Edinburgh, Edinburgh, Scotland, UK; <sup>o</sup>Department of Biological Sciences, Simon Fraser University, Burnaby, BC, Canada; <sup>p</sup>Polar Knowledge Canada, Canadian High Arctic Research Station, Cambridge Bay, NU, Canada; <sup>q</sup>Scott Polar Research Institute, Department of Geography, University of Cambridge, Cambridge, UK; <sup>r</sup>Department of Land Economy, University of Cambridge, Cambridge, UK; <sup>s</sup>Institute of Hydrobiology, Biology Centre of the Czech Academy of Sciences, Ceske Budejovice, Czech Republic; <sup>t</sup>Institute of Agricultural and Environmental Sciences - Chair of Biodiversity and Nature Tourism, Estonian University of Life Sciences, Tartu, Estonia; <sup>u</sup>Department of Forest Ecology and Management, Swedish University of Agricultural Sciences, Umeå, Sweden; <sup>v</sup>Department of Geographical and Historical Studies, University of Eastern Finland, Joensuu, Finland; <sup>w</sup>Institute of Agricultural and Environmental Sciences - Chair of Environmental Protection and Landscape Management, Estonian University of Life Sciences, Tartu, Estonia; <sup>x</sup>UK Centre for Ecology and Hydrology, Edinburgh, Scotland, UK; <sup>y</sup>Department of Arctic and Marine Biology, UiT—The Arctic University of Norway, Tromsø, Norway; <sup>z</sup>Department of Biological and Environmental Sciences, University of Gothenburg, Gothenburg, Sweden; <sup>aa</sup>Gothenburg Global Biodiversity Centre, Gothenburg, Sweden; <sup>bb</sup>European Forest Institute, Joensuu, Finland; <sup>cc</sup>Ecology and Genetics Unit, University of Oulu, Oulu, Finland; <sup>dd</sup>Cary Institute of Ecosystem Studies, Millbrook, NY, USA; <sup>ee</sup>Biology Department, Grand Valley State University, Allendale, MI, USA; <sup>ff</sup>Department of Botany, Faroe Islands National Museum, Hoyvík, Faroe Islands; <sup>gg</sup>Life and Environmental Sciences, University of Iceland, Reykjavík, Iceland; <sup>hh</sup>Department of Biology, Aarhus University, Aarhus, Denmark; <sup>ii</sup>Leverhulme Centre for Nature Recovery, School of Geography and the Environment, University of Oxford, Oxford, UK; <sup>jj</sup>Royal Netherlands Institute for Sea Research, Den Burg, the Netherlands; <sup>kk</sup>Department of Biology, Ecology Section, University of Turku, Turku, Finland; <sup>ll</sup>NASA Ames Research Center, Moffett Field, CA, USA; <sup>mm</sup>Bay Area Environmental Research Institute, Moffett Field, CA, USA; <sup>nn</sup>Norwegian Polar Institute, Fram Centre, Tromsø, Norway; <sup>oo</sup>University of Texas at El Paso, El Paso, TX, USA; <sup>pp</sup>Department of Ecoscience and Arctic Research Centre, Aarhus University, Roskilde, Denmark; <sup>qq</sup>Department of Marine Sciences, University of Gothenburg, Gothenburg, Sweden; <sup>rr</sup>Department of Applied Animal Science and Welfare, Swedish University of Agricultural Sciences, Uppsala, Sweden; <sup>ss</sup>Department of Natural History, NTNU University Museum,

Norwegian University of Science and Technology, Trondheim, Norway; <sup>†</sup>Copernicus Institute for Sustainable Development, Utrecht University, Utrecht, the Netherlands; <sup>‡</sup>Centre for African Conservation Ecology, Nelson Mandela University, Gqeberha, South Africa; <sup>§</sup>Norwegian Institute of Nature Research (NINA), Tromsø, Norway; <sup>||</sup>CESAM and Department of Biology, University of Aveiro, Aveiro, Portugal; <sup>¶</sup>Senckenberg Biodiversity and Climate Research Centre, Frankfurt, Germany; <sup>‖</sup>School of Life Sciences, Anglia Ruskin University, Cambridge, UK; <sup>‗</sup>Environmental Science Center, Qatar University, Doha, Qatar; <sup>ˆ</sup>UCL Department of Geography, University College London, London, UK; <sup>˘</sup>Department of Animal and Food Science, Universitat Autònoma de Barcelona, Barcelona, Spain; <sup>˙</sup>Department of Biological Sciences, University of Bergen, Bergen, Norway; <sup>˚</sup>Bjerknes Center for Climate Research, Bergen, Norway; <sup>¸</sup>UMR 6249 Chrono-environnement, CNRS, Université Marie et Louis Pasteur, Besançon, France; <sup>˝</sup>Groupe de Recherche en Ecologie Arctique, Francheville, France; <sup>˞</sup>Department of Biology, Queen's University, Kingston, ON, Canada; <sup>˟</sup>Wildlife Ecology & Health Group (WE&H), Departament de Medicina i Cirurgia Animals, Universitat Autònoma de Barcelona, Barcelona, Spain; <sup>ˠ</sup>Plant & Animal Ecology Lab, Departamento de Sistemas y Recursos Naturales, Universidad Politécnica de Madrid, Madrid, Spain; <sup>ˡ</sup>Institute of Arctic Studies, Dartmouth College, Hanover, NH, USA; <sup>ˢ</sup>Faculty of Environmental Sciences and Natural Resource Management, Norwegian University of Life Sciences, Aas, Norway; <sup>ˣ</sup>Department of Integrative Biology, University of Texas at Austin, Austin, TX, USA; <sup>ˤ</sup>Working Group for Wildlife Research, Clinic for Birds, Reptiles, Amphibians and Fish, Justus-Liebig-University Giessen, Giessen, Germany; <sup>˥</sup>Arctic Centre, University of Groningen, Groningen, the Netherlands; <sup>˦</sup>Netherlands Arctic Station, Ny-Ålesund, Svalbard, Norway; <sup>˧</sup>Department of Wildlife, Fish and Conservation Biology, University of California, Davis, CA, USA; <sup>˨</sup>Arctic Research Station of Institute of Plant and Animal Ecology, Ural Branch, Russian Academy of Sciences, Labytnangi, Russia; <sup>˩</sup>Kevo Subarctic Research Institute, Biodiversity Unit, University of Turku, Turku, Finland; <sup>˪</sup>Centre for Ecological and Evolutionary Synthesis, Department of Biosciences, University of Oslo, Oslo, Norway; <sup>˫</sup>National Museum of Natural History, Bulgarian Academy of Sciences, Sofia, Bulgaria

Corresponding author: **Isabel C. Barrio** (email: [isabel@lbhi.is](mailto:isabel@lbhi.is))

## Abstract

Herbivores are an integral part of Arctic terrestrial ecosystems, driving ecosystem functioning and sustaining local livelihoods. In the context of accelerated climate warming and land use changes, understanding how herbivores contribute to the resilience of Arctic socio-ecological systems is essential to guide sound decision-making and mitigation strategies. While research on Arctic herbivory has a long tradition, recent literature syntheses highlight important geographical, taxonomic, and environmental knowledge gaps on the impacts of herbivores across the region. At the same time, climate change and limited resources impose an urgent need to prioritize research and management efforts. We conducted a horizon scan within the Arctic herbivory research community to identify emerging scientific and management priorities for the next decade. From 288 responses received from 85 participants in two online surveys and an in-person workshop, we identified 8 scientific and 8 management priorities centred on (a) understanding and integrating fundamental ecological processes across multiple scales from individual herbivore–plant interactions up to regional and decadal scale vegetation and animal population effects; (b) evaluating climate change feedbacks; and (c) developing new research methods. Our analysis provides a strategic framework for broad, inclusive, interdisciplinary collaborations to optimise terrestrial herbivory research and sustainable management practices in a rapidly changing Arctic.

**Key words:** Arctic herbivores, climate change mitigation, horizon scan, management, tundra

## Introduction

Tundra herbivores are important components of Arctic socio-ecological systems (Forbes et al. 2009). For example, vertebrate herbivores represent a key resource for many northern communities through hunting or herding (Huntington et al. 2013), and invertebrate herbivores can influence local livelihoods through their impacts on vegetation (Vuojala-Magga and Turunen 2015). Herbivores are a fundamental driver of energy flows and biogeochemical cycles of Arctic tundra ecosystems (McKendrick et al. 1980; Barrio and Hik 2020). Through selective grazing, trampling, and waste deposition, herbivores influence the composition of plant and animal communities, with consequences to climate feedbacks (Zimov et al. 1995; Koltz et al. 2022). The importance of herbivores in the functioning of tundra ecosystems is amplified by their interactions with other drivers of change, as herbivores can buffer warming-induced plant responses and diversity

loss (Post and Pedersen 2008; Cahoon et al. 2012; Kaarlejärvi et al. 2017; Jessen et al. 2020; Post et al. 2023), reduce deciduous shrub encroachment (Verma et al. 2020; Vuorinen et al. 2022; Spiegel et al. 2023), or increase the resilience of Arctic ecosystems to warming (Post 2013; Kaarlejärvi et al. 2015).

Recent syntheses have shown a wealth of scientific studies on the role of herbivores in Arctic environments while also highlighting important knowledge gaps, including biases in the geographical, taxonomic, and environmental coverage of existing literature (Metcalf et al. 2018; Soininen et al. 2021). Coordinated research efforts such as the activities of the Herbivory Network (Barrio et al. 2016b) or the International Tundra Experiment (Henry et al. 2022), and long-term monitoring programmes, like the Climate-Ecological Observatory for Arctic Tundra (COAT; Ims and Yoccoz 2017) or the Greenland Ecosystem Monitoring (Schmidt et al. 2021), have been instrumental in generating new knowledge about the role of

herbivores in Arctic ecosystems. In addition, the development of new, more affordable technologies like high-resolution satellites and unmanned aerial vehicles (UAVs) (Siewert and Olofsson 2021), high-throughput DNA sequencing (Soininen et al. 2009), or artificial intelligence (Christin et al. 2019) will continue to help advance our knowledge of Arctic herbivory. Together with the accelerating impacts of climate change on herbivores and their habitats, these developments open new possibilities for both research and management of Arctic herbivores.

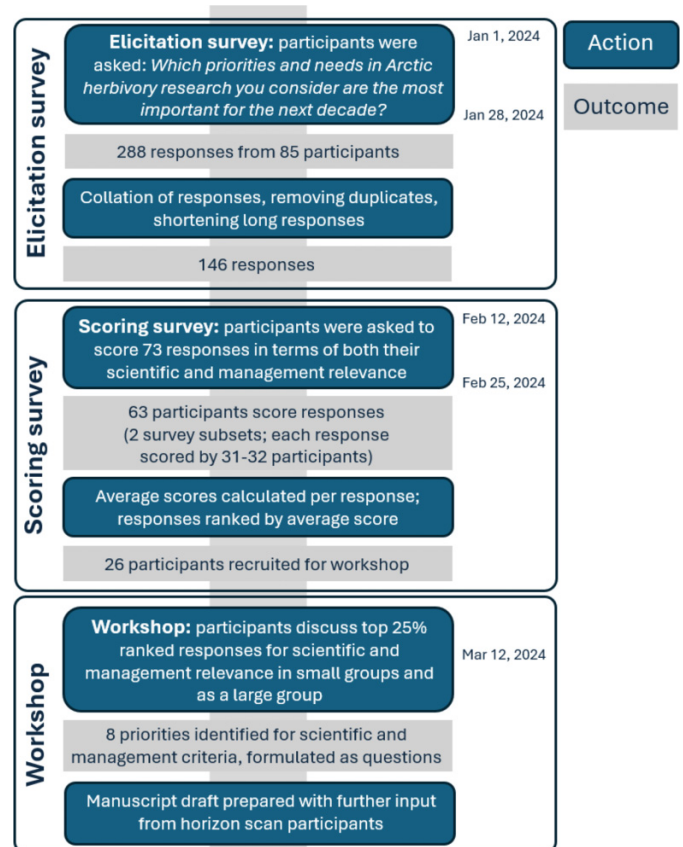
Building on these advances and the need to prioritize research efforts to address those knowledge gaps, we used a horizon scan to identify future needs in Arctic herbivory research as perceived by the scientific community. Horizon scanning is a tool to create lists of research priorities (Dey et al. 2020) that is often conducted as a democratic process by consolidating expert advice (Sutherland and Woodroof 2009). The goal of horizon scans is to guide future research and inform subsequent knowledge-based decision-making (Wintle et al. 2020). Considering the unprecedented rate of climate change at higher latitudes and the diversity and interconnectedness of ecological, conservation, and socio-economic issues regarding Arctic herbivory, a horizon scan offers an effective way to identify viewpoints and establish a consensus on strategic research needs related to Arctic herbivory for the next decade. By prioritizing the most urgent research needs, we aim to guide scientific efforts more effectively, so that the most critical questions to understanding and managing Arctic ecosystems in the face of accelerating environmental change are addressed, as well as to provide a basis for discussions with the broader community of rights holders and stakeholders.

## Methods

The idea for this project emerged from a Herbivory Network workshop organized in June 2023 in Cambridge Bay, Nunavut (Canada), as a contribution of the Arctic herbivory research community to the **Fourth International Conference on Arctic Research Planning (ICARP IV)** process. To identify emerging priorities in terrestrial herbivory research in the Arctic, we followed a Delphi-approach commonly used in horizon scanning and research prioritization exercises (Sutherland et al. 2011; Mukherjee et al. 2015; Dey et al. 2020). The process encompassed three key steps: (1) an elicitation of expert knowledge through an online survey (hereafter “elicitation survey”), (2) a follow-up online survey requesting participants to score a list of responses (hereafter “scoring survey”), and (3) an in-person workshop to summarize the information (hereafter “workshop”; Fig. 1).

We solicited researchers with expertise in Arctic terrestrial ecology to participate in the project. An initial call for collaboration was published on the **Herbivory Network website** on 28 June 2023, and on the **UArctic website** on 26 July 2023, and announced through the Herbivory Network email list (ca. 200 subscribers). An announcement was also placed on social media and forwarded to researchers with relevant background. In January 2024, the elicitation survey was sent to

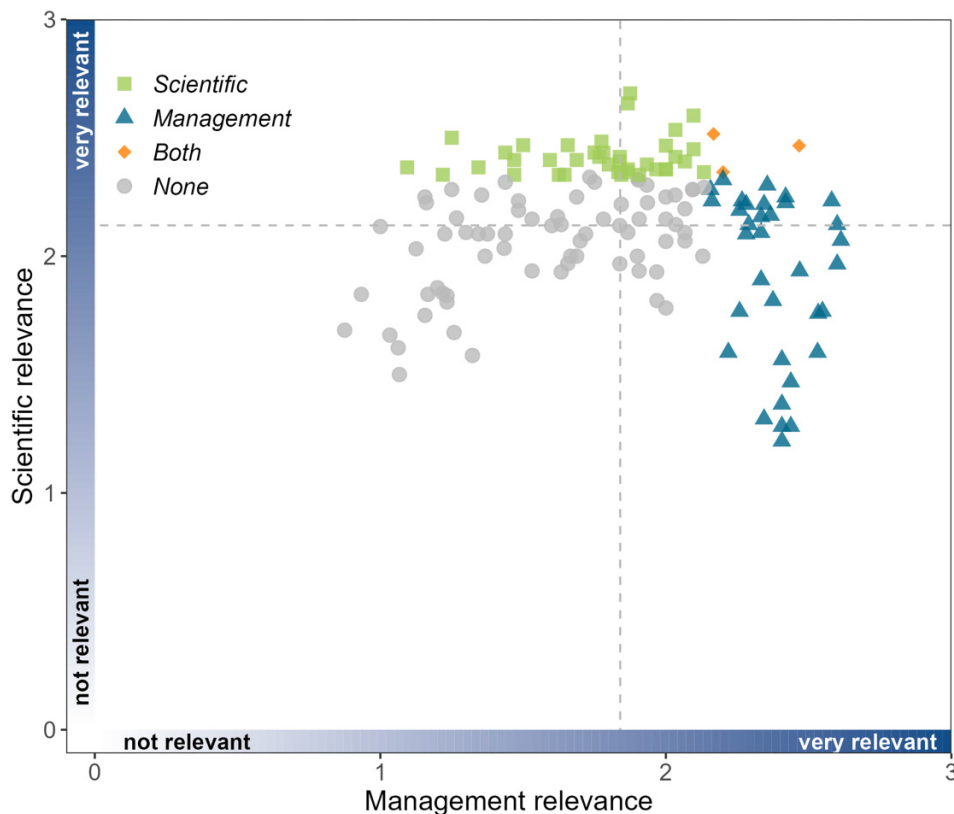
Fig. 1. Schematic diagram of the Arctic herbivory horizon scan process. The process was structured in three key steps: (1) an elicitation of expert knowledge through an online survey (elicitation survey), (2) an online survey requesting participants to score a list of responses (scoring survey), and (3) an in-person workshop to summarize the information (workshop).



Herbivory Network members as a personalized email (Supplementary Materials S1a) and advertised through the website of the Nordic Society Oikos Conference 2024. Additional reminders were sent through the Herbivory Network email list. The initial 2-week period for submitting responses to the elicitation survey was extended from 15 January to 28 January 2024.

In the elicitation survey, participants were asked to provide their perspectives on Arctic herbivory research for the coming decade by formulating up to five research priorities and needs (Supplementary Materials S1b). Here, we define the Arctic following Virtanen et al. (2016), including the oroarctic tundra, the high elevation regions at higher latitudes (~north of 59°), as these areas are climatically and ecologically more similar to the Arctic tundra than to truly alpine ecosystems farther south. Information about the participants’ career stage, gender, and geographic scope of their research was collected for the purpose of analyzing demographics of participants. Optionally, participants provided a contact email address to stay informed about the project and

**Fig. 2.** Relationship between the scientific and management relevance scores assigned to 146 responses by the 63 Arctic herbivory experts participating in the scoring survey. Scores for individual responses included in each priority ranged between 0 (not relevant) and 3 (very relevant). Each point represents the average score for one response, with colours and shapes indicating whether the response was scored in the top 25% responses according to its scientific relevance (green squares), management relevance (blue triangles), or both (orange diamonds), or whether the scores were not among the top 25% of either criterion (grey circles). Dashed grey lines indicate average scores across responses for scientific (2.84 points) and management relevance (1.84 points).



contribute towards the next stages. Email addresses were saved separately from the survey data, rendering the survey data anonymous. All survey participants agreed that their answers would be used for summary purposes in the horizon scan, as part of the Herbivory Network's input to ICARP IV research prioritization.

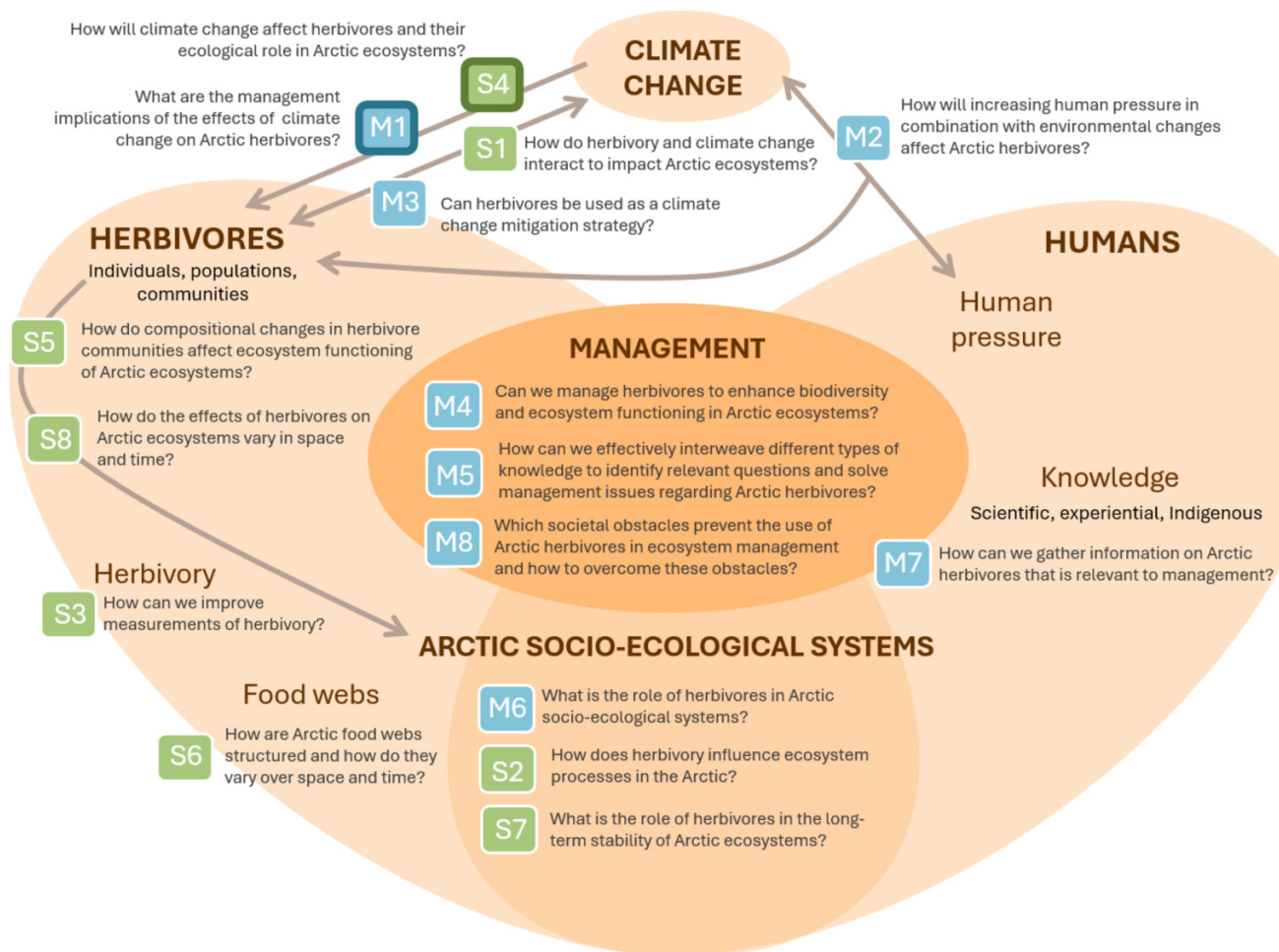
The elicitation survey compiled 288 responses from 85 participants (Fig. 1; the full list of responses can be found in Supplementary Materials S2). A core group of authors collated and edited the responses to improve clarity and remove duplication into 146 responses. In the elicitation survey, participants were invited to formulate their priorities and needs as questions, but some responses were not formulated as questions; for these, no attempt was made to write them in question form. The collated list of responses was randomly split into two equally sized subsets (73 responses each) that were used in the scoring survey (Fig. 1; Supplementary Materials S1c). The scoring survey was sent to the 83 participants who had indicated their willingness to be involved in the next steps of the research as a link in a personalized email (Supplementary Materials S1d) on 12 February 2024. Participants were given 2 weeks to respond (until 25 February 2024) and were asked to score the responses according to

two criteria: scientific relevance (i.e., resolving the issue will address an important knowledge gap) and management relevance (i.e., resolving the issue will have important management implications). The scores included four possible values: "not relevant at all", "little relevant", "relevant", and "very relevant".

A total of 63 participants responded to the scoring survey. Participants were randomly split into two groups and each group scored one of the subsets of responses, so that each response was scored by 31–32 participants. Scores for each response were transformed to integer values between 0 (not relevant at all) and 3 (very relevant) and averaged per response (the average scores for each response can be found in Supplementary Materials S2).

The workshop was attended by 26 participants, who discussed the top 25% of scored responses for each criterion (42 responses for scientific relevance, 38 for management relevance; Fig. 2). During the workshop, discussions took place initially in four small groups of 5–8 participants. All groups were tasked with synthesizing the top-ranked responses in each criterion (ca. 60 min per criterion). After the four groups had synthesized the responses independently, all workshop participants met again to establish a final consensus list of

**Fig. 3.** Overview of the relationships between the eight scientific (green) and eight management (blue) priorities identified by 26 Arctic herbivory experts in the in-person workshop of the horizon scan. Priorities with wide outline (S4, M1) indicate priorities that included responses identified with both scientific and management relevance. S = scientific priority, M = management priority.



broad priorities that were formulated as questions. A total of 16 broad priorities were identified (eight priorities for each criterion; Fig. 1). It is important to emphasize that the horizon scan's objective was to prioritize the scientific questions with important implications for management rather than listing management needs per se. Therefore, management relevance here reflects the views and experiences of the scientists participating in this study.

After the workshop, the conclusions were summarized and prepared as a manuscript draft. The full list of participants who had contributed to the different parts of the process (ca. 170 researchers) were contacted again and invited to contribute to the resulting manuscript (79 researchers co-authored the manuscript).

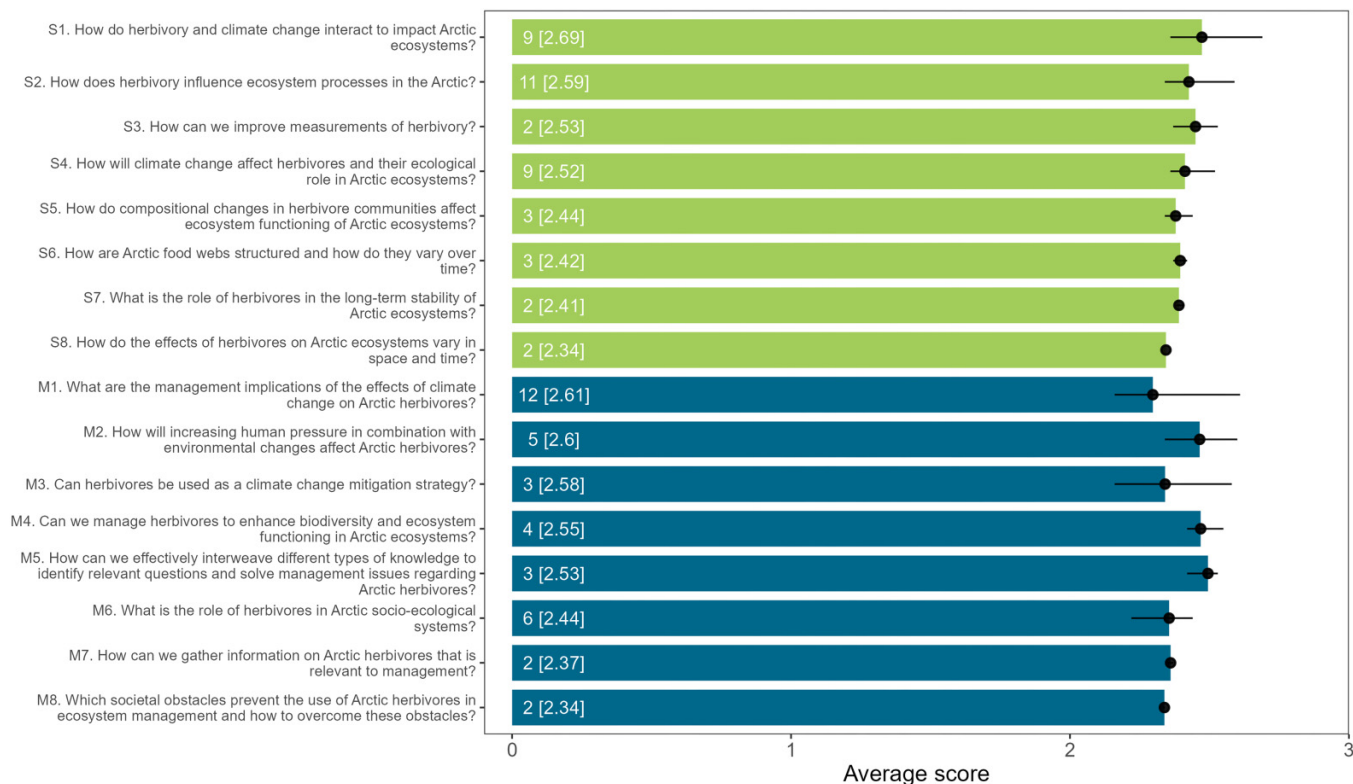
## Results and discussion

Over half of the participants in the elicitation survey were senior researchers (five or more years since obtaining a research position; 56.5%), followed by recently established researchers (15.3%), postdoctoral fellows (15.3%), PhD (11.8%),

and BSc (1.2%) students (Supplementary Materials S1e). Of the 85 participants, 43 self-identified as males, 40 as females, and 2 as non-binary. Regarding the geographical scope of the participants' research, multiple responses were possible per participant. Fennoscandia was mentioned by 40 participants, pan-Arctic scope was indicated by 25, followed by Greenland (16), Canada (15), Iceland (13), Russia (10), Alaska (9), and Svalbard (5), while 5 reported their scope to be (also) outside the Arctic (Supplementary Materials S1e). Although we did not collect information about the participants' country of professional affiliation, the author list represents a broad geographic coverage with residents in 18 countries, including all Arctic states.

The horizon scan identified 16 distinct priorities (eight for each criterion) based on the top-ranked responses resulting from the scoring survey (42 responses for scientific relevance and 38 for management relevance). Only three of these responses were identified as relevant (top 25%) for both criteria (Fig. 2), and all these three responses were included within the respective broad priority related to "climate change" (S4 and M1; Fig. 3). This is not surprising, given

**Fig. 4.** Average scores for each of the eight scientific (green) and management (blue) priorities identified during the horizon scanning exercise, as assessed by 63 Arctic herbivory researchers who participated in the scoring survey. Each priority included between two and twelve responses (number of responses included in each priority are indicated at the base of each bar). Scores for individual responses included in each priority ranged between 0 (not relevant) and 3 (very relevant). The ordering of scientific (S1–S8) and management (M1–M8) priorities is based on their highest-scoring individual response (indicated by the numbers in square brackets to the right of the bars). Average scores are indicated by black dots, and the horizontal lines represent the range of scores of individual responses (min, max).



that climate change has high societal relevance and serves as a cross-cutting theme that impacts both human and non-human lives in the Arctic. About half of the responses identified as a priority under one criterion had below-average scores for the other criterion (scientific relevance: 21 out of 42; management relevance: 19 out of 38). These differences are possibly linked to variable research fields and experience with applied research in management among the participants contributing to the scoring survey. Management priorities differ across the Arctic and are context dependent (e.g., type of ecosystems and threats, management strategies, legislations, etc.), and participants likely had varying experience in translating science into practical management advice or different perceptions of management strategy feasibility. Future studies should consider these different perspectives. For instance, submitting the same questionnaire to relevant decision-makers, rights holders and stakeholders, such as local herders and hunters, and comparing the resulting ranking of priorities would provide further important context of the priorities presented here.

The workshop developed a consensus definition of eight broader priorities (questions) for each criterion (Figs. 3 and 4; for an overview of priorities and descriptions see Ta-

bles S3.1 and S3.2). Although face-to-face workshops bear the risk of cognitive biases, such as the “bandwagon effect” where participants indiscriminately follow the majority opinion (Winkler and Moser 2016), they have been considered a suitable way to reach consensus and tend to be more inclusive and productive than other group-based techniques (Sutherland et al. 2023). Furthermore, the division of the workshop participants into four groups to independently evaluate the priorities prior to evaluating them by the entire group was intended to minimize biases. The following sections present each of the broad priorities identified for the scientific and management criteria, ordered by their highest scoring response (Fig. 4; Supplementary Material S2).

## Scientific relevance

### S1. How do herbivory and climate change interact to impact Arctic ecosystems?

Climate change can modify the impact of herbivores on different levels of biological organization, from individual organisms to ecosystems. Nine responses identified the interactive effects between herbivory and climate change on

Arctic ecosystems as a priority (Fig. 4), which received the highest average score (2.47) for scientific relevance.

Herbivores can interact with climate change to affect Arctic tundra plant phenology, physiology, and performance. For instance, plant phenology can be advanced by warming but be delayed by herbivory (Radville et al. 2016). In turn, changes in plant phenology can drive habitat selection by herbivores and lead to changes in the distribution of grazing pressure across the landscape (Anderson et al. 2012; Iversen et al. 2014; see S4 and S8). Earlier onset of spring in the Arctic allows migratory herbivores like geese to arrive and start foraging sooner at Arctic breeding sites (Hupp et al. 2018; Lameris et al. 2018), with potentially large effects on forage quality (Beard et al. 2019a) and other plant traits (Choi et al. 2019). Climate change and herbivory can also affect the physiology of forage plants synergistically. For example, both insect and mammalian herbivory can amplify the emission of plant volatile organic compounds, simultaneously increased by warming (Li et al. 2019; Brachmann et al. 2023).

The effects of herbivores and climate change on plant phenology, physiology, or performance may scale up to impact Arctic plant distributions and vegetation composition. For instance, herbivores may modulate vegetation responses to climate change (Post and Pedersen 2008; Barrio et al. 2016a) through inhibiting warming-driven expansion of woody species and buffering shrub- and treeline advance (Christie et al. 2015; Virtanen et al. 2021). Vertebrate herbivores may also constrain the expansion of warm-adapted forbs (Kaarlejärvi et al. 2013; Eskelinen et al. 2017), but the paucity of studies focusing on non-woody plant species prevents generalizations (but see, for example, Saccone et al. 2014; Post et al. 2022). By selectively feeding on common species (see S2) vertebrate herbivory can counteract the negative effects of warming on species diversity (Kaarlejärvi et al. 2017; Post et al. 2023). While vertebrate herbivores may slow down tundra greening at regional scales (Sundqvist et al. 2019; Spiegel et al. 2023), their influences on overall pan-Arctic greening trends remain unaddressed (Myers-Smith et al. 2020).

Herbivory can also modulate the effects of climate change on Arctic ecosystem functioning (Koltz et al. 2022). By removing vegetation through grazing, herbivores suppress the responses of gross ecosystem productivity to warming (Cahoon et al. 2012; Spiegel et al. 2023). Herbivores can indirectly alter tundra carbon cycling and modify soil nutrient availability through trampling and by selective feeding, which shifts vegetation trajectories (Ylänne et al. 2015; Vowles and Björk 2019; Pichon et al. 2023), but these effects can differ under warming (Ylänne et al. 2015, 2020). We still lack a detailed understanding of the conditions under which the indirect effects of herbivores on Arctic carbon and nutrient cycling might interact with climate change.

Finally, it is important to recognize that climate change entails factors other than warming, such as changing precipitation patterns, altered frequency of freeze-thaw cycles during spring melt, and higher frequency and intensity of extreme weather events (IPCC 2021). Yet, how herbivory might modulate the role of these key environmental change drivers on ecosystem functioning is virtually unknown, and

we urge future studies to test their potentially interactive effects.

## S2. How does herbivory influence ecosystem processes in the Arctic?

Beyond their interactions with climate change (see S1), herbivory influences ecosystem processes directly and indirectly. Through the consumption of biomass, the deposition of waste products, and habitat-modifying behaviours, herbivores exert a strong influence on Arctic ecosystems (Koltz et al. 2022). Despite the rich literature on herbivore effects on Arctic tundra (Soininen et al. 2021; Barbero-Palacios et al. 2024), we are only beginning to understand these direct and indirect influences and how they may interact. This priority included the largest number of responses (11; Fig. 4), many of them with high scores for scientific relevance, indicating that we still lack basic understanding of herbivore effects on tundra ecosystem processes. Responses covered a variety of taxa and topics, including the effects of vertebrate and invertebrate herbivores on the biodiversity, resilience, and resistance of tundra ecosystems and on key ecosystem processes like nutrient cycling.

Herbivores can affect competitive relationships between plants and thus influence the biodiversity of Arctic ecosystems (Ramirez et al. 2024). Both large and small herbivores can reduce the decline in plant species richness in tundra by selectively removing shrubs and allowing rare species to persist (see S1; Kaarlejärvi et al. 2017; Gibson et al. 2021). Alternatively, consistent feeding on palatable species can result in dominance of less palatable species that outcompete herbaceous plants (Bräthen et al. 2007). In addition, disturbance from large herbivores can alter resource and habitat availability for other vertebrate (den Herder et al. 2008, 2016) and invertebrate herbivores (den Herder et al. 2004), further influencing tundra biodiversity. The impact of large herbivores, however, depends on the intensity of grazing (Bräthen et al. 2017) and on the diversity of herbivores (Olofsson and Post 2018). Large herbivores can preserve the integrity of tundra ecosystems by preventing shrub encroachment and tree establishment (Moen et al. 2008; Bräthen et al. 2017; Olofsson and Post 2018). In turn, high grazing pressures can shift shrub-dominated tundra towards graminoid dominance (Van der Wal 2006). To better understand the effects of herbivores on biodiversity and the resilience and resistance of tundra ecosystems, we need a better grasp of the role of different intensities of grazing pressure (Bräthen et al. 2017).

Herbivores directly contribute to nutrient cycling through the deposition of waste products, including faeces and urine (Barthelemy et al. 2018; Beard et al. 2023), carcasses (Danell et al. 2002), and natal fluids (Ferraro et al. 2024). In nutrient-limited Arctic systems, nutrient supply commonly occurs in pulses linked to animal inputs (Danell et al. 2002; Barthelemy et al. 2015). These inputs can accelerate the pace of cycling (Barthelemy et al. 2018), increase forage quality (Petit Bon et al. 2022; Ferraro et al. 2024), change plant community composition (Danell et al. 2002), influence plant biomass (Barthelemy et al. 2015), topsoil microclimate (Deschamps et al. 2023), and ultimately shape landscape heterogeneity

(Ferraro et al. 2022). As such, animal inputs seem to be an important mechanism of accelerated nutrient cycles in Arctic ecosystems, but their impacts are modified by the underlying biophysical conditions, including soil conditions and plant-mycorrhizal associations (Ferraro et al. 2022).

Finally, our understanding of the impact of invertebrate herbivores in Arctic ecosystems remains sparse. Background levels of invertebrate herbivory in the Arctic are low (Barrio et al. 2017; Rheubottom et al. 2019) and have limited overall impacts on ecosystem-level processes such as carbon and nutrient cycling (Koltz et al. 2017; Kristensen et al. 2020; but see Silfver et al. 2020). However, population outbreaks of herbivorous insects can severely impact tundra productivity (Lund et al. 2017) and are predicted to become more common with warming temperatures in some regions (Finger-Higgins et al. 2021; Jepsen et al. 2023). As well, insect outbreaks can interact with reindeer grazing, modulating the trajectories of vegetation recovery after massive defoliation events (Vindstad et al. 2019). Further work investigating the role of invertebrate herbivores in shaping Arctic ecosystem-level processes is needed.

### S3. How can we improve measurements of herbivory?

The need for standardized protocols and coordinated efforts to measure herbivory across the tundra has been long recognized (Barrio et al. 2016b, 2021; see also M7), but challenges remain in scaling up from individual organisms and plot-level to landscape- and ecosystem-level impacts. Although only two responses were included within this priority (Fig. 4), participants ranked the need to improve measurements of herbivory with high scientific relevance.

Several field-based methodologies for measuring herbivory and herbivore use have been used, ranging from observational assessments of herbivore habitat use by pellet counts and other signs of herbivore activity to the use of exclosures to experimentally manipulate the presence of vertebrate herbivores (Barbero-Palacios et al. 2024). Standardizing existing field methodology is an obvious and necessary first-step towards accurate measurements of herbivory that allow meaningful comparisons of data collected across studies. Traditional field-based approaches provide a basic understanding of the impacts of herbivores, but additional insights can be gained by leveraging GPS technologies to understand how herbivores use space and resources. GPS collars on animals are a key tool to track movement patterns and identify key habitats for foraging. New devices like tri-axial accelerometers that track specific behaviours (Rautiainen et al. 2022) and camera collars that capture visual data on feeding behaviours and plant species consumed (Ehlers et al. 2024) may expand our ability to track and analyze the impact of herbivory on Arctic ecosystems.

Recent advances in UAVs and satellite remote sensing have also opened new possibilities for monitoring herbivore impacts on vegetation. The emergence of pre-processed high- (~1–5 m, e.g., PlanetScope, Worldview) and medium-resolution (~5–30 m, e.g., Sentinel-2, Landsat) satellite remote sensing products facilitates incorporating spatially ex-

PLICIT information, including phenology metrics, into predictive models. Additionally, UAVs offer the opportunity to monitor herbivory across the spatially heterogeneous Arctic tundra at fine-scale resolutions currently unavailable with satellite imagery (Alonzo et al. 2020; Assmann et al. 2020; Eischeid et al. 2021; Siewert and Olofsson 2021; Villoslada et al. 2023). UAVs can also be used in combination with satellite data through upscaling approaches (Villoslada et al. 2024), resolving sub-pixel heterogeneity while expanding the spatial reach of models (but see Eischeid et al. 2021).

Despite these promising technological advances for monitoring herbivore populations and herbivory in the Arctic, significant challenges remain regarding validation and characterization of environmental controls (Beamish et al. 2020). Using several technological approaches will be our best bet for improving measurements of herbivory in the Arctic. For example, Spiegel et al. (2023) used spaceborne remote sensing and participatory mapping to identify regional migrations of domesticated reindeer herds and vegetation changes, showing the potential to capture herbivore impact on Arctic vegetation over large spatial scales. Field-based measurements of herbivory are still crucial for ground-truthing and developing reliable remote sensing models and provide the necessary link between herbivory and remotely sensed information. Importantly, scale mismatches between plot-level data and satellite imagery can introduce uncertainties in modelling outputs (Beamish et al. 2020; Siewert and Olofsson 2021). In turn, the rapid recovery of vegetation after herbivory also poses challenges in detecting the impacts of herbivory in a timely manner (Ravolainen et al. 2011). The use of remote sensing technologies can allow collecting a great volume of data, but requires cooperation between scientific disciplines and participation of stakeholders (e.g., Spiegel et al. 2023), to efficiently interpret and process large amounts of data. Advances in deep machine learning and automated image recognition may offer tools for increased processing speed and data interpretation (Christin et al. 2019; Tuia et al. 2022; Wang et al. 2024).

### S4. How will climate change affect herbivores and their ecological role in Arctic ecosystems?

Ultimately, the effects of climate change on herbivore populations will lead to altered herbivore densities and distributions (see S5), with consequences for both vegetation and tundra ecosystem functions (see S1 and S2). Nine responses described climate change effects on herbivores as a priority, and three of these responses also scored as relevant (top 25%) for management (orange points in Fig. 2). These three responses highlighted the need for a better understanding of the impact of extreme weather events on herbivore populations, how herbivores will respond to climate-driven changes in vegetation, and the direct and indirect effects of climate change on herbivore populations (Table S3.1).

The observed increases in the frequency and intensity of extreme weather events, like rain-on-snow or warmer winter spells, can dramatically impact herbivore populations (Hansen et al. 2011; see M1). Refreezing of water on the ground after rain-on-snow events can form basal ice layers

that prevent access to food by herbivores (Hansen et al. 2013). Examples of the devastating effects of winter warming on herbivore populations include extensive mortality of reindeer in Yamal, Russia (Forbes et al. 2016) and the decline of the entire herbivore community following “rain-on-snow” events on Svalbard (Hansen et al. 2013). Autumn rains also have strong effects on lemming demography, as they create a hard ground ice layer that prevents lemming access to food (Domine et al. 2018). While some information is available on how winter warming and rain-on-snow events affect herbivores (Hansen et al. 2013; Loe et al. 2016), knowledge about the effect of other extreme weather events associated with a changing climate, like extreme summer heat and droughts, is virtually missing.

Climate change can also affect herbivores through its effects on forage quantity, quality, and availability and by altering the overall vegetation structure. For example, shrubification associated with climate warming alters forage quantity, quality, and availability to many herbivores (Joly et al. 2009; Doiron et al. 2014; Thompson and Barboza 2014). Changes in plant phenology associated with climate change (Prev y et al. 2017) can lead to trophic mismatches if the availability of highly nutritious forage plants decouples from the timing of high herbivore nutritional demands (Doiron et al. 2015). Trophic mismatch can lead to reduced herbivore reproductive success (Post and Forchhammer 2008) and limited offspring growth and survival (Kerby and Post 2013b; Doiron et al. 2015; Lameris et al. 2018; see M1). By altering vegetation structure, warming-induced shrubification enhances habitat quality for biting and parasitic insects and affects herbivores by increasing insect harassment (Johnson et al. 2021). Shrubbyfication can also alter habitat connectivity, potentially benefiting browsers such as moose (*Alces alces* (Linnaeus, 1758); Zhou et al. 2020), but negatively impacting grazers such as barren-ground caribou (Fullman et al. 2017) or other herbivores like Arctic ground squirrels (*Urocitellus parryi* (Richardson, 1825); Wheeler et al. 2015) that rely on the openness of the tundra to spot predators.

The combined direct and indirect effects of climate change on herbivores are species- and context-specific, and therefore complex to predict. For instance, warmer springs may lead to shallower snowpacks and can influence lemming populations directly by providing less thermal insulation and increasing their thermoregulatory costs (Poirier et al. 2023) and indirectly by exposing them to greater predation (Domine et al. 2018). In turn, earlier springs also lead to enhanced food availability for muskoxen, indirectly increasing their fecundity and reducing their mortality (Duncan et al. 2021). Further, the effects of climate change need to be considered across seasons. For example, warmer summers and autumns increase forage availability for wild reindeer, while warm spells during winter can encase vegetation in basal ice and hence reduce access to forage (Albon et al. 2017; Loe et al. 2021). The strength of these climate-induced effects can also vary spatially, resulting in different population trends (Hansen et al. 2019b). Our understanding of the complex interplay between climate change and herbivore population dynamics remains superficial and requires long-term ecosystem-based monitoring programs to disentangle the di-

rect and indirect effects of climate change, and their combined effects on herbivore populations.

## S5. How do compositional changes in herbivore communities affect ecosystem functioning of Arctic ecosystems?

Arctic herbivore community dynamics are driven by the complex interplay of many factors. Climate change, through its direct and indirect impacts on herbivores (see S4), is a particularly strong driving force, currently altering the composition of herbivore communities in the Arctic (Speed et al. 2021). Understanding how these changes will influence the functioning of Arctic ecosystems is a key scientific priority. Three responses in the horizon scan described this priority (Fig. 4), with a focus on understanding the combined effects of guild-specific herbivore impacts on ecosystem functioning, and the effects of changing herbivore diversity and community composition on tundra ecosystems.

Tundra ecosystems host a range of functionally different herbivores (henceforth referred to as “guilds”), from invertebrates to migratory geese and large herbivores (Speed et al. 2019b). Differences in body size, habitat preferences, and population dynamics across guilds imply different impacts on ecosystem functioning (Barbero-Palacios et al. 2024). For instance, heavy grazing by reindeer can increase albedo at a regional scale by reducing shrub height and abundance (Cohen et al. 2013; Te Beest et al. 2016), while lemmings and long-term grazing by geese can locally and regionally decrease albedo through the consumption of vegetation and subsequent exposure of darker soils (Conkin and Alisauskas 2017; Lara et al. 2017). Even herbivore species within the same guild can have contrasting effects on ecosystem processes. For example, hay piles constructed by lemmings increase soil phosphorus content, but this effect is not observed under vole hay piles (Roy et al. 2022). Further, the combined effect of herbivore guilds on tundra ecosystems is less well understood and most evidence comes from effects on plants (Barbero-Palacios et al. 2024). The effects of one guild may complement or buffer the effects of another. For example, the combined effects of grazing by reindeer and small rodents can suppress the growth of tall shrubs (Ravolainen et al. 2014), while these groups of herbivores dampen each other’s effects on plant nutrient content (Petit Bon et al. 2020). As such, changes in the composition of herbivore communities will determine the overall effects of herbivores and their spatiotemporal variation across the landscape.

Around the Arctic, ongoing environmental and management changes modulate the abundance and distribution of herbivore populations (e.g., Mallory and Boyce 2018; Ehrlich et al. 2019; Cuyler et al. 2020), which further shapes the composition of herbivore communities (Speed et al. 2019a; Defourneaux et al. 2024; Sokolova et al. 2024) and their impact on tundra ecosystems. For example, some boreal herbivores like moose (*Alces alces*; Tape et al. 2016) and beaver (*Castor canadensis* (Kuhl, 1820); Tape et al. 2018) are expanding their distribution into the Arctic tundra, while the ranges of other Arctic species are shrinking (van Beest et al. 2023), leading to the borealization of Arctic herbivore assemblages

(Speed et al. 2021). Due to the important role of herbivores in Arctic ecosystems (see S2), it is necessary to understand the differences between species, their interactions, and how they may change to predict how Arctic systems will function under future herbivore community assemblages.

## S6. How are Arctic food webs structured and how do they vary over time and space?

Herbivores are embedded in complex food webs where they interact directly and indirectly with multiple species at different trophic levels. Understanding how Arctic food webs are structured and how they vary over time and space was identified as a key scientific priority in three responses (Fig. 4).

Arctic herbivores have been instrumental for developing food web ecology as a discipline. Early studies investigated the fluctuating population dynamics of small herbivores using the long-term population records collected by Canadian fur trading companies, such as the emblematic Hudson Bay's lynx-hare and fox-lemming datasets (Elton 1924). More recent studies have focused on understanding the mechanisms behind Arctic herbivore population cycles (Gilg et al. 2003; Ims and Fuglei 2005; Gruyer et al. 2008). Consumer–resource interactions under the constraints of the harsh Arctic environment provide plausible mechanisms accounting for these cycles (Ims and Fuglei 2005), but questions remain about the relative importance of herbivore–plant or predator–herbivore interactions as drivers of these cycles (Gilg et al. 2003; Gruyer et al. 2008; Ruffino et al. 2016; Soininen and Neby 2024).

Compared to temperate ecosystems, Arctic terrestrial food webs are relatively simple (Elton 1927). Our understanding of the major trophic linkages and compartments in Arctic food webs has been greatly enhanced by comprehensive ecosystem-based monitoring programmes (Pedersen et al. 2019; Schmidt et al. 2021; Gauthier et al. 2024). However, the functional links between species can be complex and dynamic and require the explicit integration of spatial and temporal variations in trophic interactions. High-resolution data on replicated food webs can improve ecological assumptions and predictive capacity (Soininen et al. 2018) but require data-heavy approaches (Kissling et al. 2014). Sampling trophic interactions remains a challenge, but the relatively well-integrated research community could also be harnessed to adopt a truly circumpolar food web approach, as exemplified in Mellard et al. (2022). This will require developing cost-efficient standard protocols to enable a coordinated and spatially replicated sampling of trophic interactions (see, for example, Kankaanpää et al. 2020). Deploying high-throughput methods for diet analysis such as stable isotopes and DNA metabarcoding (e.g., Hiltunen et al. 2022; Pansu et al. 2022) should be part of the toolkit, enabling the broad-scale but detailed characterization of multi-trophic interactions. DNA metabarcoding already offers great scope for unlocking the hidden dimensions of animal diets and trophic niche partitioning (Soininen et al. 2009; Neby et al. 2024), and revealing winter diet in voles (Soininen et al. 2015). The genomic approach can be generalized to fill the current knowledge

gaps in seasonal foraging of other herbivore species (see S8). However, work should also be carried out in parallel to address current methodological limitations: i.e., assessing the quantitative performance of DNA metabarcoding (Kamenova et al. 2024) and developing plant DNA reference databases for Arctic regions outside Fennoscandia where these databases are relatively complete (Voldstad et al. 2020). The structure of food webs is an important determinant of ecosystem functioning and stability (Tylianakis and Morris 2017) that can influence their resilience and transformation in response to biological invasions (Frost et al. 2019). This is highly relevant to Arctic food webs, given the projected changes in herbivore population dynamics and resource use stemming from climate warming-driven processes such as tundra borealization or Arctic greening (see S1 and S2; Wirta et al. 2015; Schmidt et al. 2017; Gauthier et al. 2024).

## S7. What is the role of herbivores in the long-term stability of Arctic ecosystems?

Understanding the role of herbivores in the long-term stability of Arctic ecosystems is an urgent priority, considering the rapid pace of environmental changes in the region. Two responses in the horizon scan identified this priority (Fig. 4).

Reconstructions of past megaherbivore assemblages offer important insights into how the distribution, density, and diversity of herbivores have shaped community and ecosystem dynamics from 300 million years ago up to the large mass extinctions (Owen-Smith 1987). This work has contributed to the “keystone herbivore” hypothesis (Owen-Smith 1987), which posits that the productivity of the steppe–tundra during the Pleistocene was maintained by megaherbivores. The “keystone herbivore” hypothesis is further supported by archived time series of dietary samples. Dietary reconstructions for species such as the woolly mammoth, including analyses of the composition of gut tissue (Cucina et al. 2021), gut and lower intestine content (Ukrantseva 1981), or coprolites (Polling et al. 2021) provide strong support for a diet dominated by herbaceous plants and shrubs, with occasional consumption of lichens, mosses, and green algae. In this context, dietary samples can provide a key tool to assess long-term changes in plant–herbivore interactions (see also S6).

The mass extinction of megaherbivores towards the end of the Pleistocene coincided with a decline in the steppe–tundra and the expansion of the shrub tundra in the Arctic (Willerslev et al. 2014; Wang et al. 2021). Whether this change in vegetation was driven by climate or by the extinction of megaherbivores, and whether the mass extinction of megaherbivores was caused by changes in climate or by human hunting, has been debated (Zimov et al. 1995; Monteath et al. 2021; but see also Svenning et al. 2024). There has been much recent interest in re-establishing extinct past herbivore assemblages (i.e., rewilding; Olofsson and Post 2018) and on the capacity of current tundra vegetation to sustain these herbivore assemblages (Poquérousse et al. 2024). The potential to reintroduce large herbivores in the Arctic could mitigate some of the effects of warming (Olofsson and Post 2018; Macias-Fauria et al. 2020) but requires biological, social, and ethical considerations (Burak et al. 2024; see M3 and M8).

Following the mass extinctions of megaherbivores, large mammalian grazers have continued to be important regulators of vegetation patterns worldwide, including in the Arctic (see S1 and S2). For instance, research on historical reindeer milking grounds and enclosures in Fennoscandia reveal long-term legacy effects of high local densities of semi-domesticated reindeer (Egelkraut et al. 2018; Huusko et al. 2024). These studies show that locally, high reindeer densities can lead to shifts from shrub-dominated tundra to alternative stable vegetation states dominated by herbaceous plants that can persist for hundreds of years (Normand et al. 2017). Small mammalian herbivores, such as voles and lemmings, may further contribute to limiting shrub growth in these historical milking grounds (Egelkraut et al. 2018).

Through their effects on vegetation, nutrient cycling, and climate feedbacks (see S2), herbivores are important regulators of long-term ecosystem processes and ecosystem stability in tundra ecosystems, although effects vary across spatial scales (see S8) and among herbivore assemblages (see S5). Improved understanding of the mechanisms that determine large-scale and long-term effects of plant–herbivore interactions is an important avenue of research.

## S8. How do the effects of herbivores on Arctic ecosystems vary in space and time?

It has long been recognized that the effects of herbivores vary greatly depending on where and when herbivory takes place. Two responses in the horizon scan identified the spatiotemporal variability of herbivore impacts as a scientific priority (Fig. 4).

Herbivores' use of landscapes is heterogeneous, and their foraging choices span multiple spatial scales, from individual plants to the landscape level (Senft et al. 1987). Foraging decisions, in turn, may lead to an uneven distribution of herbivore impacts across the landscape (see S1). One notorious example is the profound spatial variation in the intensity of the interactions between small rodents and plants, where strong impacts have been documented in some parts of the Arctic (Olofsson et al. 2012; Roy et al. 2022) but not in others (Bilodeau et al. 2014). Even within the same region, the effects of small rodents on vegetation can differ between river catchments 20 km apart (Ravolainen et al. 2011). Differences in primary productivity and in food web structure could account for these pronounced spatial differences between different tundra ecosystems (Gauthier et al. 2011; Oksanen et al. 2020).

Another source of variation in plant–herbivore interactions is timing, which is particularly important in highly seasonal environments like the Arctic tundra (Post et al. 2008). Some migratory herbivores are only present in the Arctic during summer, while other herbivores are resident year-round (Speed et al. 2019b). In addition, herbivore populations generally fluctuate among years, leading to temporal variations in grazing impacts on vegetation. For example, the population cycles of voles and lemmings cause synchronous fluctuations in plant biomass (Olofsson et al. 2012; Siewert and Olofsson 2021), and periodic outbreaks of geometrid moths can lead to vegetation shifts in the tundra–forest ecotone (Vindstad et

al. 2019). Changes in the timing of herbivory can have important ecosystem consequences. For example, grazing by early arriving migratory geese can shift tundra ecosystems from a C sink to a source, while delayed goose arrival can lead to opposite outcomes (Beard et al. 2019b). Further, food preferences of herbivores change throughout the growing season in response to phenological changes in food quality and availability (Iversen et al. 2014; Barboza et al. 2018; see S4). Parallel to these changes in food quality, the chemical composition of waste deposition also varies seasonally (Beard et al. 2023), potentially leading to varying seasonal impacts of herbivores on tundra biogeochemistry. Understanding the drivers of the spatiotemporal variability of herbivore effects is crucial for predicting how tundra ecosystems will respond to ongoing environmental changes. This will require targeted efforts that include underrepresented Arctic environments (Soininen et al. 2021) and special attention to the timing and multiple spatial scales at which these effects manifest.

Although we have a relatively good understanding of changes in herbivory during the growing season, there is a clear gap in our knowledge on herbivore impacts during winter and shoulder seasons (autumn and spring). Snow properties, including the distribution of snow and timing of snowmelt, can influence the spatiotemporal variability of herbivore impacts across the landscape (Rixen et al. 2022). A recent synthesis suggested that the effects of small rodents on vegetation may be most pronounced during winter (Soininen and Neby 2024), with winter browsing strongly suppressing heavily defended dwarf shrubs (Dahlgren et al. 2009). Similarly, winter browsing by ptarmigan and moose has strong effects on the growth, reproduction, and architecture of willows (Christie et al. 2014). In turn, food availability during winter has large repercussions for population dynamics of resident Arctic herbivores and ultimately determines the carrying capacity (Albon et al. 2017; see M4). A better understanding of plant–herbivore interactions during winter and their consequences to both plants and herbivores is therefore needed.

## Management relevance

### M1. What are the management implications of the effects of climate change on Arctic herbivores?

Climate change will affect Arctic herbivores in direct and indirect ways (see S4). From a management perspective, changes in disease dynamics of plants and herbivores, herbivore habitat or behaviour, herbivory rates, food availability (e.g., access to food in winter), or in the adaptive capacity of herbivores (e.g., physiological tolerance to climate extremes), are highly relevant. This priority included the largest number of responses (12) but received the lowest average score for management relevance among the identified management priorities (average score: 2.3; Fig. 4), including the highest and the lowest ranked responses (scores 2.61 and 2.16, respectively).

Rapid changes in abiotic and biotic conditions in the Arctic will influence herbivore populations (see S4) and create new challenges for natural resource managers and local liveli-

hoods. Effective herbivore management in a changing climate requires high-quality data on herbivore abundances and vital rates, and on drivers like abiotic factors, including weather variability and extreme weather events. Effective management will also require anticipating and mitigating the various ecological and evolutionary disruptions caused by rapid climate change. At broader spatial scales, these ecological disruptions include shifting distributions of plants, other herbivores, predators and pathogens (van Beest et al. 2021; Yarzabal et al. 2021), and the subsequent changes in biotic interactions (Mellard et al. 2022; see S6). For example, the northward expansion of deer and moose has indirectly resulted in increased predation pressure on caribou by grey wolf (Festa-Bianchet et al. 2011). In addition, the spread of novel diseases represents formidable challenges for management of herbivore populations. Range expansion of southern deer species increases the risk of new zoonotic pathogens and parasites not formerly present in the Arctic, which become lethal when infecting new hosts (Pickles et al. 2013). For instance, the outbreak of chronic wasting disease in Norway in 2016 required the extirpation of the third-largest wild reindeer population to prevent the spread of the disease (Mysterud and Rolandsen 2018; Mysterud et al. 2024). These examples demonstrate the need for assessing and monitoring the spread of diseases and their vectors (Di Francesco et al. 2021; Johnson et al. 2023).

An important management concern, as reflected explicitly by three responses, is how climate change will influence food availability and its consequences to herbivore diet composition and quality. As mentioned in S4, rain-on-snow events that prevent herbivore access to food in winter are predicted to become more frequent under climate change, and these events can lead to extensive mortality, particularly when reindeer densities are high (Hansen et al. 2019a, 2019b). Warming-related changes in plant community composition, including decreases in lichen availability, can reduce pasture quality (Joly et al. 2009) and negatively impact herbivore population growth, as described for caribou herds across North America (Fauchald et al. 2017). Further, trophic mismatches associated with climate change (see S4) can reduce herbivore reproductive success, as documented for caribou in West Greenland (Post and Forchhammer 2008). Some herbivores might be susceptible to phenological mismatches (Gustine et al. 2017), while others might be able to adjust their behaviour to buffer some of the negative effects of climate change (Kerby and Post 2013a; Loe et al. 2016). However, understanding and predicting the adaptive capacity of Arctic herbivores to rapid abiotic and biotic changes is a critical step for effective management of herbivore populations in the Arctic.

## M2. How will increasing human pressure in combination with environmental changes affect Arctic herbivores?

As human impact in the Arctic accelerates and becomes more ubiquitous, herbivore populations are increasingly exposed to direct and indirect impacts affecting population abundances and vital rates (Klein 2000). Understand-

ing how increasing human pressure and other environmental changes will affect Arctic herbivores was identified as a key priority for management, with the third highest average score (Fig. 4). Human pressures include a wide range of impacts, such as habitat loss to infrastructure, land use changes and fragmentation, natural resource exploration and exploitation, recreational activities, farming, and the spread of diseases (see M1). Responses included in this priority highlighted studying the ability of herbivores and the livelihoods that depend on them to adapt to both the individual and the cumulative impacts from multiple stressors.

The impacts of anthropogenic activities on Arctic herbivores have been well documented, particularly for muskoxen (*Ovibos moschatus* (Zimmermann, 1780); Cuyler et al. 2020) and wild and semi-domesticated *Rangifer* spp. (Festa-Bianchet et al. 2011; Skarin and Åhman 2014). Human infrastructure and resource extraction directly cause habitat loss, fragment landscapes, and can disrupt migration routes for herbivores between seasonal habitats (Severson et al. 2023; Boulanger et al. 2024). Noise pollution, visual disturbance, dust deposition, and pollutant contamination (Plante et al. 2018; Skarin et al. 2018; Watkinson et al. 2021) effectively increase the zone of influence and lead to avoidance behaviour. Avoidance may vary with season, level of human activity, type of industry, and herbivore species. For example, large herbivores usually have the largest avoidance during calving and higher tolerance towards disturbances during the insect harassment period (Skarin et al. 2018; Johnson et al. 2020; Prichard et al. 2020). One major challenge is identifying the spatial and temporal extent and variation of the zone of influence within which herbivores respond to disturbances and their cumulative impacts (Niebuhr et al. 2023). Tolerance to disturbance varies with species, domestication, handling, and taming of the animals. Tolerance can also increase if resources are scarce, hiding possible adverse effects of disturbances. While some studies conclude that habituation towards disturbances is possible (Colman et al. 2013), others find it weak or absent (Johnson et al. 2014, 2020). Thus, predicting the effect of increased anthropogenic impacts remains difficult and highly context dependent. Long-term studies across habitats and seasons are needed to understand the implications of increasing human activities on the habitats of Arctic herbivores and how these impacts translate to population level consequences. Furthermore, we need to understand better how habitats can be restored to maintain the carrying capacity for viable large herbivore populations to sustain the hunting and herding livelihoods that depend on them. This includes, for instance, restoring mining sites once mineral resources have been depleted, as well as alternative forest management and increased landscape connectivity for seasonal migrations.

## M3. Can herbivores be used as a climate change mitigation strategy?

Using large wild and domestic herbivores as a management tool to mitigate some of the effects of climate change is receiving increasing attention (see S7). Three responses (Fig. 4) referred to the potential use of herbivores to restore lost ecosystem functions, counteract climate change effects

on tundra ecosystems, or prevent further warming through their effects on climate feedbacks.

Herbivores in the Arctic and the subarctic can help mitigate climate change (Cromsigt et al. 2018; Beer et al. 2020; Macias-Fauria et al. 2020; Windirsch et al. 2022). Browsing on shrubs and trees by large herbivores prevents the expansion of woody plants (Olofsson et al. 2009; Olofsson and Post 2018) and can promote graminoids, forbs, and other low-lying biotic ground cover such as lichens (Stark et al. 2002; Olofsson et al. 2004; see S1 and S2). These vegetation shifts can have a cooling effect, as graminoids, forbs, and in particular lichens reflect more sunlight than darker, taller shrubs and trees and increase albedo (Zimov et al. 2012; Cohen et al. 2013; Te Beest et al. 2016). However, the most important albedo effect of low-lying vegetation is in the continuous snow layer that it promotes, which results in large quantities of solar energy reflected in the shoulder seasons, especially spring, as compared to landscapes where tall vegetation protrudes from the snow layer and enhances snow melt and energy absorption. In addition, low-lying vegetation can also help mitigate permafrost thaw, as it promotes wind-packing of snow, reducing the insulation capacity of the snowpack and maintaining colder soil temperatures (Sturm et al. 2001a, 2001b). In addition, large herbivores trample snow in winter, increasing soil exposure to cold air, aiding permafrost maintenance and expansion (Beer et al. 2020; Macias-Fauria et al. 2020). Yet, observations of accelerated permafrost degradation in mires grazed in summer by semi-domestic reindeer in Fennoscandia (Holmgren et al. 2023) suggest that the effects of large herbivores on permafrost strongly depend on environmental context and grazing regimes. To be able to increase albedo and permafrost preservation through herbivore management, we need further studies on the role of herbivore density, plant community composition, and environmental context.

Large herbivores in Arctic systems could also mitigate the impacts of climate change by increasing soil carbon storage. Grazing-induced graminoid-dominated systems can store more carbon than shrub-dominated systems due to faster biomass turnover and relatively deep and dense root structures, increasing soil carbon storage within the first meter of soils (Olofsson et al. 2009; Windirsch et al. 2022). Herbivores also accelerate nutrient cycles (Van der Wal and Brooker 2004), facilitating ecosystem carbon uptake (Falk et al. 2014). Modelling studies suggest that they can also enhance net primary production (Zhu et al. 2018). However, this effect is not universal and grazing intensity, grazing regime, and environmental context are important mediators of net effects (Burak et al. 2024). For instance, intense grazing in upland systems can reduce vegetation biomass, muting any increase in ecosystem carbon storage (Jefferies et al. 2006; Väisänen et al. 2014). In contrast, grazing in wetter landscapes can decrease the ratio of emitted methane-to-CO<sub>2</sub>, reducing the global warming potential without changing the net C-balance (Fischer et al. 2022). A more comprehensive understanding of the biotic and abiotic factors influencing herbivore-carbon interactions, the spatiotemporal variability in herbivore impacts, and how herbivores influence other elemental cycles (Koltz et al. 2022) will lead to better predictive models of

where and when large herbivores may affect carbon storage and energy balance and thus effectively be used to mitigate climate change effects.

Although large herbivore management has the potential to be used as a climate mitigation tool, the feasibility of applying such strategies remains questionable. To have a significant effect on global climate, drastic increases in the diversity and density of herbivore assemblages would be needed (Macias-Fauria et al. 2020; Yläne and Stark 2025). Such increases might only be feasible at very local scales as induced by human management, but also pose other problems associated with environmental degradation following overgrazing (Windirsch-Woiwode 2024).

#### M4. Can we manage herbivores to enhance biodiversity and ecosystem functioning in Arctic ecosystems?

In addition to the potential application as a climate change mitigation and adaptation strategy (see M3), management of large wild and domestic herbivores can enhance biodiversity and ecosystem functioning in the tundra (Bräthen et al. 2017; see S2). In our horizon scan, this priority was described in four responses (Fig. 4).

Current management of large herbivores varies across the Arctic due to differences in legislations, and these differences may lead to different impacts on tundra biodiversity and ecosystem functioning (Forbes and Kumpula 2009). For example, in Northern Fennoscandia, reindeer herding practices differ among countries, from seasonal migration to sedentary regimes, driving contrasting vegetation patterns and ecosystem impacts (Holand et al. 2022). Reindeer herds fluctuate due to both environmental and management changes. For instance, the collapse of the Soviet Union caused large declines in some domesticated reindeer herds but increases in others (Uboni et al. 2016). In addition, pressures from competing land uses (see M2) prevent the use of some pastures, concentrating grazing pressure in the remaining pastures (e.g., Horstkotte et al. 2022). The additive effects of co-occurring herbivore species also need to be considered (see S5). Although herbivore diversity has been shown to slow the decline in biodiversity driven by warming (Post et al. 2023) and enhance ecosystem functioning (e.g., Ravolainen et al. 2014), managing multiple species with different population densities and dynamics within the same area brings additional challenges.

Taking domesticated reindeer in Eurasia as an example, the possibility of managing herbivores to enhance biodiversity and ecosystem functioning lies primarily in the right to use the pastures and self-determination of the Indigenous reindeer herding groups (Larsson Blind 2022). Biodiversity and ecosystem functioning could be enhanced, especially in summer pastures, by re-establishing long-term grazing practices that have been lost or re-distributing grazing pressure to allow heavily grazed pastures to recover. However, such measures include a number of challenges as they would require maintaining or even increasing herd sizes (Uboni et al. 2020). This is difficult because herd sizes are largely constrained by forage availability during winter (Moen et al. 2006), which is

in turn reduced by climate change and increased pressures from competing land uses (Uboni et al. 2020). Supplementary feeding could increase reindeer survival and production but is costly and difficult to maintain (Åhman et al. 2022), and results in fundamental behavioural changes that affect the overall ecosystem effects of herbivory as well as increasing the risk of disease (Tryland et al. 2019). Further, the maximum number of reindeer allowed in a herding district is based on winter grazing ground carrying capacity and is set by government authorities, thus affecting self-governing by the herders (Sarkki et al. 2022). In addition, a main constraint to actively steering herds to appropriate summer pastures to avoid excessive grazing of some areas is the availability of labour, as the number of herders has declined in parts of Fennoscandia (Uboni et al. 2020). In the extensive reindeer husbandry systems that prevail, herds roam freely in summer, apart from certain activities such as calf markings, and their habitat selection is largely dependent on forage availability and other biotic and abiotic factors, including human disturbance (see M2). The possibility to explicitly manage domesticated herbivores for maintaining biodiversity and the provision of ecosystem services will thus be a complex process that includes considering the annual pasture cycle, competing land uses, and the political systems of governance.

#### **M5. How can we effectively interweave different types of knowledge to identify relevant questions and solve management issues regarding Arctic herbivores?**

The value of experiential knowledge, derived from a close cultural connection to the land and passed down through generations, and Indigenous knowledge, rooted in specific ethnic contexts and shaped by the cultures, traditions, practices, and beliefs of descendants of people who inhabited a region prior to colonization, is increasingly recognized within the scientific community for its contribution to understanding ecological and environmental processes and wildlife management (Berkes et al. 2000; Hill et al. 2020; Jessen et al. 2022). Three responses mentioned the importance of interweaving experiential, Indigenous, and scientific knowledge in managing herbivores and their ecosystem effects. Participants ranked this priority the highest (average score: 2.49; Fig. 4).

Experiential and Indigenous knowledge are often described as integrated into a way of life and associated with practices such as hunting, trapping, or herding. In this sense, knowledge is cumulative and is culturally transmitted through language, skills, and practices, and is continuously tested against recent observations and is thus adaptive to environmental change (Savo et al. 2016; Ford et al. 2020). This knowledge is embedded in specific norms, values, and holistic worldviews (Berkes et al. 2000; Brondízio et al. 2021). Taken out of its context, there is a risk that the meaning and significance of these forms of knowledge will be lost (Albuquerque et al. 2021). Successfully interweaving different ontologies for knowledge co-production, and particularly Indigenous knowledge, therefore requires establishing mutual trust, respectful engagement of cultural approaches,

and equal power relations between partners to overcome the historical burden of colonialism and marginalization of Indigenous peoples (Wheeler et al. 2020). The participation of knowledge holders in all stages of the research process, from identifying relevant questions and agreeing on methods, to data collection and analysis and knowledge dissemination, is vital to prevent extractive processes, but may vary in agreement with involved research partners (David-Chavez and Gavin 2018).

Contributions of interweaving various forms of knowledge for Arctic herbivore management have led to deeper insights of species and population trends, spatial and temporal changes in migration patterns, responses to disturbance, spread of diseases, and the effects of climate change and integrity of the Arctic social-ecological system (e.g., Parlee et al. 2005; Peacock et al. 2020; Gagnon et al. 2023). For instance, Gagnon et al. (2023) developed predictive models of caribou distribution and hunters' access to the herds in response to environmental factors, based on hunters' Indigenous knowledge, GPS collared caribou, and climate models, as a tool to assess the effects of climate change on the local communities' food security and cultural relation to caribou. As this example demonstrates, considering the impacts of human activities and climate change, co-developing adaptive management and conservation strategies to protect both herbivore populations and their habitats is critical. Implementing these strategies also requires bridging the interface between experiential and Indigenous knowledge, scientific knowledge, and government policies (Yua et al. 2022). For instance, policies that restrict hunting quotas or implement limits for semi-domesticated reindeer herd size, while at the same time promoting the exploitation of natural resources, can erode trust and increase the potential for frictions between government and communities, thus preventing meaningful knowledge co-production and adaptive management (Parlee et al. 2018; Larsson Blind 2022; Sarkki et al. 2022). However, the co-development of new management strategies offering solutions to address current caveats is also on the rise (Simba et al. 2024). For instance, the use of quality checked protocols for stakeholder involvement, such as the strategic foresight protocol (Hamel et al. 2022) and Community-Benefits Agreements (Gunton and Markey 2021), can help define assets, incentives, risks, and roles and can create a roadmap of shared purpose among participants involved in herbivore management across rights holders and stakeholders who bring diverse ways of knowing.

#### **M6. What is the role of herbivores in Arctic socio-ecological systems?**

The roles of herbivores within Arctic socio-ecological systems span biological, economic, and cultural dimensions. Six responses emphasized the need to understand these roles and their relevance to maintaining viable rural communities in the Arctic and subarctic (Fig. 4, Table S3.2).

Reindeer/caribou, moose, muskoxen, ptarmigan, waterfowl, and hares are hunted across the Arctic, providing food for subsistence use, while other herbivores like reindeer are herded in parts of their range. Aside from food, materials

like furs, antlers, and bones can be reworked by local artisans to make items for personal use or for sale, including clothing, jewelry, and tools (Aslaksen et al. 2009). Carrying out these practices provides Arctic people with material resources, as well as opportunities to facilitate the transmission of cultural knowledge and skills (e.g., Pearce et al. 2015; Laptander 2023). The language, behaviour, and stories shared during these practices can maintain community bonds and allow more intangible spiritual understandings about purpose, identity, and how to relate to other beings to be communicated and enacted (Justice 2018; Ravna 2020; Salusky et al. 2022). In the wider ecological system, the grazing and fertilizing action of herbivores maintains multiple ecological processes, creating habitats that support other plants and animals that Arctic people rely on and can influence climate feedback processes (Olofsson et al. 2004; Te Beest et al. 2016; Yläne et al. 2021), thus affecting humans globally. Despite the importance of herbivores to the livelihood and subsistence of local communities, these activities often do not represent a main economic source for the country (e.g., in comparison to fisheries; Bjørndal and Munro 2012), resulting in lack of priority national funding for long-term monitoring. Nevertheless, there are some positive counterexamples such as the subnational support for preserving Indigenous country food practices in Nunavut (Wartier et al. 2021).

Several aspects of the role of herbivores in these socio-ecological systems require more research. The full extent of the impact of herbivores on global climate processes is not yet well understood (Koltz et al. 2022; Stark et al. 2023), and larger spatial coverage of research on reindeer and other herbivores across the Arctic would be valuable (Soininen et al. 2021). Similarly, how herbivores are adapting to changes in climate and anthropogenic land use requires more study so that the consequences to food security can be predicted (Cuyler et al. 2020; Stoessel et al. 2022; van Beest et al. 2023). Given the tight interplay between ecological and socio-political factors in the Arctic (e.g., Naylor et al. 2021), interdisciplinary approaches encompassing natural, social, and Indigenous sciences will be needed to address these gaps in understanding, and to reliably inform policy and management strategies going forward (Riseth et al. 2011; Baztan et al. 2017; Moirano et al. 2020; Pedersen et al. 2020; Tsuji et al. 2020; Kater 2022).

### **M7. How can we gather information on Arctic herbivores that is relevant to management?**

Focus on improving and further developing methods to monitor herbivore abundance and population dynamics, and the use of new technologies to collect data at spatial and temporal scales that are relevant to management, is a key priority. Two responses were included under this priority (Fig. 4).

Gathering information that is relevant to management should be grounded in robust conceptual models that can integrate the diversity of spatial and temporal data existing for a system and guide new data collection. These conceptual models can help define key system-specific parameters to monitor and identify data gaps and guide adaptive management approaches. An excellent example of a framework

where conceptual models guide monitoring and data collection is COAT (Ims and Yoccoz 2017). In COAT's conceptual models, climate and management are the main drivers of change and data collection is tailored to management needs. These needs are defined based on long-term involvement of rights holders including Indigenous people (herders), stakeholders, and managers, and are guided by national and international management plans. For example, the need for reliable data on abundance and distribution of herbivores is set by management goals targeting population sizes. Based on these data, management decisions will guide different actions depending on whether the goal is to increase, reduce, or maintain stable populations.

Collecting data at spatial and temporal scales relevant to the herbivore and the management setting in question remains challenging. However, recent technological developments in remote sensing, GPS tracking, and bio-logging (see S3) to gather detailed information on herbivore movements, feeding patterns, and real-time responses to environmental changes represent a significant advance. In addition, high-resolution and non-invasive methods such as genomic sequencing of pathogens (Seru et al. 2024) and faecal material (Soininen et al. 2009; Neby et al. 2024), microhistology (Filella et al. 2023), or near-infrared spectroscopy (Tuomi et al. 2023) can provide spatially and temporally explicit information on herbivore disease and diet, which can inform harvesting, herding, or other management decisions.

The rapid changes faced by herbivores in many ecosystems demand that managers anticipate future changes to implement short- and long-term strategies to reduce negative, unwanted impacts. Near-term ecological forecasts provide a framework for such predictions (see Marolla et al. (2021) for a specific example on rock ptarmigan). Management contexts and goals differ, and management actions must be based as much as possible on scientific evidence and knowledge co-production (see M5). Focusing on well-described, transparent, and scientifically robust processes that set up the communication and workflows between scientists, managers, and local communities involved is therefore key to jointly defining research questions and study designs using an adaptive approach (Lindenmayer et al. 2011). For example, Henden et al. (2020) offer a case study for stakeholder involvement in management of willow ptarmigan in northern Norway, where collective learning allowed defining questions and guided data collection. Successfully interweaving knowledge systems (see M5) and developing strong partnerships requires investment of time and funding to facilitate cooperation between stakeholders, and building initiatives on key lessons learned from successful initiatives (e.g., Hamel et al. 2022).

### **M8. Which societal obstacles prevent the use of Arctic herbivores in ecosystem management and how can these obstacles be overcome?**

Knowledge is of little practical value if societal obstacles prevent its use in management. Two responses mentioned the attitudes of Arctic stakeholders and the societal obstacles that prevent the use of Arctic herbivores in ecosystem management (Fig. 4).

Obstacles that prevent the translation of knowledge into practice and policies can relate to economic, cultural, legislative, ethical, and behavioural factors. These factors can be identified for example by mapping the attitudes of participants (Bauer et al. 2009) or promoting the use of deliberative democracy methods in which public consultation with citizens is central to democratic processes (Lépy et al. 2018). Other approaches, like tackling legislative barriers across country borders (Trouwborst et al. 2016; see also Heininen et al. 2020), collaborating with environmental ethicists (Ferraro et al. 2021), and developing micro- and macroeconomic solutions to enable financing of more sustainable herbivore management (Karolyi and Tobin-de la Puente 2023) could also help overcome these obstacles. These approaches, however, remain little used in the Arctic.

Interestingly, the two responses included in this priority were ranked among the lowest in scientific importance (average scores for scientific relevance 1.90 and 1.31), which might reflect the predominant natural science background of survey participants and their varying experience in translating science into applied research and management advice. Future prioritization exercises could engage more social scientists, reinforcing inter- and transdisciplinary research (see Ivanov et al. 2024), to identify the social dimensions of management decisions. Thus, in addition to strengthening our knowledge on herbivores and their interaction with climate change from a natural sciences perspective, there is a need for economic, socio-political, cultural, juridical, ethical, and human behavioural studies around herbivores and their use (see Artner and Siebert 2006; Burak et al. 2024).

## Conclusions

This horizon scan has identified 16 emerging priorities in the field of Arctic terrestrial herbivory research that should be addressed over the next decade. The horizon scan concluded that understanding the impacts and effects of herbivory and herbivores on tundra ecosystems in rapidly changing environments remains a high priority. However, one general observation from this horizon scan is that there is still a need for closer integration of research and management priorities. We chose to balance the number of research and management questions (Fig. 3), but also recognize that there is often a persistent gap between ecological science and environmental management priorities (Underwood 1998; Gosselin et al. 2018).

Our categories of *science* and *management* are complementary only to the extent that their knowledge perspectives have an obvious interface. Researchers should be able to improve the applicability of their research through interacting better with resource managers and Indigenous organizations who are directly responsible for management decisions and interventions. Further, we encourage partnerships to co-design applied management research based on relevant questions and knowledge needs. Future research that addresses the priorities that we have identified will benefit from a more deliberate effort to conduct studies that incorporate management perspectives, including testing of management interventions and investigating alternatives when current practices fail (Underwood 1998).

Our consensus was that the most important research questions for the next decade pertain to fundamental ecological processes at different scales, climate change, technology and innovation, sustainability, and the co-production of knowledge and solutions. Climate change was featured in several scientific (S1, S4) and management (M1, M3) priorities. The impacts of climate change are seen and felt across Arctic environments and are particularly impactful at the local and community level, for example for herbivores that are harvested for subsistence. The impacts of climate change will influence how research is conducted and may affect the implementation of natural resource use, management, and conservation practices.

The upcoming **Fifth International Polar Year** in 2032–2033 will provide considerable motivation for planning and developing new research initiatives on Arctic herbivores. These initiatives should include coordinated ecosystem-based and circumpolar efforts that incorporate diverse knowledge systems into future research programs. It will be important to match the current state-of-knowledge and emerging technology with the quickly changing dynamics of many Arctic herbivores and the environmental changes occurring in tundra ecosystems. Addressing these priorities will require developing new methods and inclusive, interdisciplinary collaborations.

Including diverse research communities and management bodies are both prerequisites for effective cross-domain knowledge sharing and adoption. This new knowledge can be incorporated into formal institutional policies and processes. In terms of facilitating and enhancing the interface between science and management, we are hopeful that our horizon scan research prioritization will help to create and sustain informal “communities of practice”, for example, through the Herbivory Network (Barrio et al. 2016b; <http://herbivory.lbhi.is>) or independently. These efforts will also enable periodic updates of this horizon scan, complemented with the additional insights from diverse stakeholders.

## Acknowledgements

This project has been endorsed by the International Arctic Science Committee as an ICARP IV activity. C.D. Brown kindly provided feedback on an earlier version of this manuscript. This manuscript is dedicated to the memory of A. Augusti who contributed with enthusiasm to the early stages of this project.

## Article information

### History dates

Received: 11 December 2024

Accepted: 24 April 2025

Accepted manuscript online: 14 May 2025

Version of record online: 20 June 2025

### Copyright

© 2025 The Author(s). This work is licensed under a **Creative Commons Attribution 4.0 International License** (CC BY 4.0), which permits unrestricted use, distribution, and reproduc-

tion in any medium, provided the original author(s) and source are credited.

## Data availability

Data and scripts used to generate the figures presented in the manuscript are available on GitHub: <https://github.com/icbarrio/ArcticHerbivoryHorizonScan>.

## Author information

### Author ORCIDs

Isabel C. Barrio <https://orcid.org/0000-0002-8120-5248>  
 Katariina E.M. Vuorinen <https://orcid.org/0000-0002-4774-6796>  
 Laura Barbero-Palacios <https://orcid.org/0000-0002-3495-5839>  
 Mathilde Defourneaux <https://orcid.org/0000-0002-8960-9036>  
 Matteo Petit Bon <https://orcid.org/0000-0001-9829-8324>  
 Eleanor A. Greer <https://orcid.org/0009-0002-2961-8720>  
 Helen B. Anderson <https://orcid.org/0000-0002-4666-3622>  
 Tim Horstkotte <https://orcid.org/0000-0003-3951-5370>  
 Nicolas Lecomte <https://orcid.org/0000-0002-8473-5375>  
 Torben Windirsch <https://orcid.org/0000-0002-4292-6931>  
 Kristy Ferraro <https://orcid.org/0000-0002-0884-7826>  
 Bruce C. Forbes <https://orcid.org/0000-0002-4593-5083>  
 Jennifer S. Forbey <https://orcid.org/0000-0001-6069-4049>  
 Mariana García Criado <https://orcid.org/0000-0001-7480-6144>  
 Liyenne Hagenberg <https://orcid.org/0000-0003-0952-1585>  
 David S. Hik <https://orcid.org/0000-0002-8994-9305>  
 Ilona Kater <https://orcid.org/0000-0002-2910-1337>  
 Petr Macek <https://orcid.org/0000-0002-4792-9461>  
 Jon Moen <https://orcid.org/0000-0002-4641-0932>  
 Maja K. Sundqvist <https://orcid.org/0000-0001-5947-839X>  
 Jerzy Szejgis <https://orcid.org/0000-0002-3934-798X>  
 Miguel Villoslada <https://orcid.org/0000-0001-7777-6577>  
 Erica Zaja <https://orcid.org/0009-0003-4053-8040>  
 Fanny Berthelot <https://orcid.org/0000-0002-8646-5081>  
 Katrín Björnsdóttir <https://orcid.org/0000-0001-7421-9441>  
 Johannes Cunow <https://orcid.org/0009-0006-4830-1162>  
 Michael den Herder <https://orcid.org/0000-0002-6562-3407>  
 Anu Eskelinen <https://orcid.org/0000-0003-1707-5263>  
 Katherine Hayes <https://orcid.org/0000-0002-6612-9398>  
 Robert D. Hollister <https://orcid.org/0000-0002-4764-7691>  
 Kolbrún í Haraldsstovu <https://orcid.org/0000-0002-4862-2306>  
 Ingibjörg Svala Jónsdóttir <https://orcid.org/0000-0003-3804-7077>  
 Jeppe A. Kristensen <https://orcid.org/0000-0001-7168-9405>  
 Thomas K. Lameris <https://orcid.org/0000-0001-7023-3406>  
 Lauri Oksanen <https://orcid.org/0000-0003-1006-1520>  
 Johan Olofsson <https://orcid.org/0000-0002-6943-1218>  
 Taejin Park <https://orcid.org/0000-0003-0698-6942>  
 Åshild Ø. Pedersen <https://orcid.org/0000-0001-9388-7402>  
 Juan Ignacio Ramirez <https://orcid.org/0000-0003-1836-8105>  
 Virve T. Ravolainen <https://orcid.org/0000-0001-8411-7238>  
 Austin Roy <https://orcid.org/0000-0002-2519-6455>  
 Ingvild Ryde <https://orcid.org/0000-0001-6544-1446>  
 Niels Martin Schmidt <https://orcid.org/0000-0002-4166-6218>

Benedikt Schrofner-Brunner <https://orcid.org/0000-0002-9679-5746>  
 Anna Skarin <https://orcid.org/0000-0003-3221-1024>  
 James D.M. Speed <https://orcid.org/0000-0002-0633-5595>  
 Mariska te Beest <https://orcid.org/0000-0003-3673-4105>  
 Mikaela Simmonds <https://orcid.org/0000-0001-7360-3046>  
 Rita T. Torres <https://orcid.org/0000-0003-4570-459X>  
 Wolfgang Traylor <https://orcid.org/0000-0002-4813-1072>  
 Risto Virtanen <https://orcid.org/0000-0002-8295-8217>  
 Helen C. Wheeler <https://orcid.org/0000-0002-9820-5818>  
 Juha M. Alatalo <https://orcid.org/0000-0001-5084-850X>  
 Jan C. Axmacher <https://orcid.org/0000-0003-1406-928X>  
 Jordi Bartolomé Filella <https://orcid.org/0000-0002-3784-5248>  
 Elisabeth J. Cooper <https://orcid.org/0000-0002-0634-1282>  
 Sonya R. Geange <https://orcid.org/0000-0001-5344-7234>  
 Olivier Gilg <https://orcid.org/0000-0002-9083-4492>  
 Paul Grogan <https://orcid.org/0000-0002-7379-875X>  
 Carlos Hernández-Castellano <https://orcid.org/0000-0003-0211-6018>  
 Toke T. Høye <https://orcid.org/0000-0001-5387-3284>  
 Jeffrey T. Kerby <https://orcid.org/0000-0002-2739-9096>  
 Kari Klanderud <https://orcid.org/0000-0003-1049-7025>  
 Amanda M. Koltz <https://orcid.org/0000-0002-7341-4306>  
 Johannes Lang <https://orcid.org/0000-0002-7387-795X>  
 Mathilde Le Moullec <https://orcid.org/0000-0002-3290-7091>  
 Maarten J.J.E. Loonen <https://orcid.org/0000-0002-3426-4595>  
 Marc Macias-Fauria <https://orcid.org/0000-0002-8438-2223>  
 Eric Post <https://orcid.org/0000-0002-9471-5351>  
 Emmanuel Serrano <https://orcid.org/0000-0002-9799-9804>  
 Matthias Siewert <https://orcid.org/0000-0003-2890-8873>  
 Aleksandr Sokolov <https://orcid.org/0000-0002-1521-3856>  
 Natalia Sokolova <https://orcid.org/0000-0002-6692-4375>  
 Otso Suominen <https://orcid.org/0000-0002-7209-6078>  
 Mariana Tamayo <https://orcid.org/0000-0003-3966-4042>  
 Alexandra Terekhina <https://orcid.org/0000-0002-2949-0520>  
 Alexander Volkovitskiy <https://orcid.org/0000-0001-8767-0944>  
 Stefaniya Kamenova <https://orcid.org/0000-0002-7241-0506>

### Author notes

Present address for Thomas K. Lameris is Groningen Institute for Evolutionary Life Sciences (GELIFES), Groningen, the Netherlands.

Ingibjörg Svala Jónsdóttir served as Associate Editor at the time of manuscript review and acceptance; peer review and editorial decisions regarding this manuscript were handled by another editorial board member.

### Author contributions

Conceptualization: ICB, KEMV, LBP, MD, NL, BCF, DSH, JDMS, SK

Data curation: ICB, KEMV, LBP, MD, MPB, EAG, HBA, NL, TW, SK

Formal analysis: ICB, KEMV, LBP, MD, MPB, EAG, TW, SK

Funding acquisition: ICB, SK

Investigation: ICB, KEMV, LBP, MD, MPB, EAG, TW, SK

Methodology: ICB, KEMV

Project administration: ICB, SK

Resources: ICB, LBP, MD, MPB, EAG, TH, NL, TW, KMF, BCF, LWCH, DSH, MKS, JS, MV, EZ, FB, KB, JC, MdH, AE, KH, KIH, ISJ, JAK, TL, JO, TP, ÅØP, JIR, ANR, IR, NMS, BSB, JDMS, MtB, RTT, WT, RV, HCW, JMA, SG, OG, CHC, JTK, AK, JL, EP, MBS, ASo, NS, OS, AT, AV, SK

Validation: ICB

Visualization: ICB, LBP

Writing – original draft: ICB, KEMV, MPB, EAG, HBA, TH, NL, TW, KMF, JSF, MGC, LWCH, DSH, IK, PM, JM, MKS, JS, MV, EZ, MdH, KH, RDH, KIH, JAK, LO, TO, TP, ÅØP, JIR, VR, ANR, NMS, AS, MtB, RTT, RV, HCW, OG, SK

Writing – review & editing: ICB, KEMV, LBP, MD, MPB, EAG, HBA, TH, NL, TW, KMF, BCF, JSF, MGC, LWCH, DSH, IK, PM, JM, MKS, JS, MV, EZ, FB, KB, JC, MdH, AE, KH, RDH, KIH, ISJ, JAK, TL, LO, TO, JO, TP, ÅØP, JIR, VR, ANR, IR, NMS, BSB, AS, JDMS, MtB, MS, RTT, WT, RV, HCW, JMA, JCA, JBF, EC, SG, OG, PG, CHC, TTH, JTK, KK, AK, JL, MLM, MJJEL, MMF, EP, ES, MBS, ASo, NS, OS, MT, AT, AV, SK

## Competing interests

The authors declare there are no competing interests.

## Funding information

Funding to support the participation of early career scientists in the HN meeting organized at the Canadian High Arctic Research Station in Cambridge Bay, Nunavut, Canada, and the workshop organized in Lund, Sweden, was made available by the Terrestrial Working Group of the International Arctic Science Committee (IASC). Many of the discussions held during the meeting contribute to the TUNDRA salad project (grant No. 217754), funded by the Icelandic Research Fund, and the activities of the Nordic Borealization Network (NordBorN) funded by NordForsk (project No. 164079). Funding to cover the open access publication of this manuscript was provided by the Open-Access Publication Fund of the Agricultural University of Iceland. NL was supported by the Canada Research Chair program, NSERC, and Université de Moncton. MGC was funded by the EU Horizon 2020 Research and Innovations Programme through the CHARTER project (Grant #869471) and by the NERC TundraTime project (NE/W006448/1). MPB was supported by the National Science Foundation (grant ANS-2113641). RTT was supported by a research contract (DOI:10.54499/2021.00690.CEECIND/CP1659/CT0029; ref. 2021.00690.CEECIND/CP1659/CT0029) and thanks FCT/MCTES for the financial support to UID Centro de Estudos do Ambiente e Mar (CESAM) + LA/P/0094/2020).

## Supplementary material

Supplementary data are available with the article at <https://doi.org/10.1139/as-2024-0080>.

## References

Åhman, B., Turunen, M., Kumpula, J., Risvoll, C., Horstkotte, T., Lépy, É., and Eilertsen, S.M. 2022. Role of supplementary feeding in reindeer husbandry. *In* Reindeer husbandry and global environmental change: pastoralism in Fennoscandia. Taylor and Francis. pp. 232–248. doi:10.4324/9781003118565-17.

- Albon, S.D., Irvine, R.J., Halvorsen, O., Langvatn, R., Loe, L.E., Ropstad, E., et al. 2017. Contrasting effects of summer and winter warming on body mass explain population dynamics in a food-limited Arctic herbivore. *Global Change Biology*, **23**: 1374–1389. doi:10.1111/gcb.13435.
- Albuquerque, U.P., Ludwig, D., Feitosa, I.S., de Moura, J.M.B., Gonçalves, P.H.S., da Silva, R.H., et al. 2021. Integrating traditional ecological knowledge into academic research at local and global scales. *Regional Environmental Change*, **21**: 45. doi:10.1007/s10113-021-01774-2.
- Alonzo, M., Dial, R.J., Schulz, B.K., Andersen, H.-E., Lewis-Clark, E., Cook, B.D., and Morton, D.C. 2020. Mapping tall shrub biomass in Alaska at landscape scale using structure-from-motion photogrammetry and lidar. *Remote Sensing of Environment*, **245**: 111841. doi:10.1016/j.rse.2020.111841.
- Anderson, H.B., Godfrey, T.G., Woodin, S.J., and van der Wal, R. 2012. Finding food in a highly seasonal landscape: where and how pink footed geese *Anser brachyrhynchus* forage during the Arctic spring. *Journal of Avian Biology*, **43**: 415–422. doi:10.1111/j.1600-048X.2012.05699.x.
- Artner, A., and Siebert, R. 2006. The role of the social sciences for biodiversity and ecosystem management. *Jahrbuch der Österreichischen Gesellschaft für Agrarökonomie*, **15**: 129–141.
- Aslaksen, I., Dallmann, W., Holen, D.L., Høydahl, E., Kruse, J., Poppel, B., et al. 2009. Interdependency of subsistence and market economies in the Arctic. *In* The economy of the North. Edited by S. Glomsrød and I. Aslaksen. Statistics Norway, Oslo. pp. 75–98.
- Assmann, J.J., Myers-Smith, I.H., Kerby, J.T., Cunliffe, A.M., and Daskalova, G.N. 2020. Drone data reveal heterogeneity in tundra greenness and phenology not captured by satellites. *Environmental Research Letters*, **15**: 125002. doi:10.1088/1748-9326/abbf7d.
- Barbero-Palacios, L., Barrio, I.C., García Criado, M., Kater, I., Petit Bon, M., Kolari, T.H.M., et al. 2024. Herbivore diversity effects on Arctic tundra ecosystems: a systematic review. *Environmental Evidence*, **13**: 6. doi:10.1186/s13750-024-00330-9.
- Barboza, P.S., Van Someren, L.L., Gustine, D.D., and Sydonia Bret-Harte, M. 2018. The nitrogen window for Arctic herbivores: plant phenology and protein gain of migratory caribou (*Rangifer tarandus*). *Ecosphere*, **9**: e02073. doi:10.1002/ecs2.2073.
- Barrio, I.C., and Hik, D.S. 2020. Herbivory in Arctic Ecosystems. *In* Encyclopedia of the world's biomes. Vol. 2. Edited by M.I. Goldstein and D.A. DellaSala. Elsevier. pp. 446–456. doi:10.1016/b978-0-12-409548-9.11791-9.
- Barrio, I.C., Bueno, C.G., and Hik, D.S. 2016a. Warming the tundra: reciprocal responses of invertebrate herbivores and plants. *Oikos*, **125**: 20–28. doi:10.1111/oik.02190.
- Barrio, I.C., Hik, D.S., Jónsdóttir, I.S., Bueno, C.G., Mörsdorf, M.A., and Ravolainen, V.T. 2016b. Herbivory Network: an international, collaborative effort to study herbivory in Arctic and alpine ecosystems. *Polar Science*, **10**: 297–302. doi:10.1016/j.polar.2016.03.001.
- Barrio, I.C., Ehrlich, D., Soininen, E.M., Ravolainen, V.T., Bueno, C.G., Gilg, O., et al. 2021. Developing common protocols to measure tundra herbivory across spatial scales. *Arctic Science*, **8**(3): 638–679. doi:10.1139/as-2020-0020.
- Barrio, I.C., Lindén, E., Te Beest, M., Olofsson, J., Rocha, A., Soininen, E.M., et al. 2017. Background invertebrate herbivory on dwarf birch (*Betula glandulosa-nana* complex) increases with temperature and precipitation across the tundra biome. *Polar Biology*, **40**: 2265–2278. doi:10.1007/s00300-017-2139-7.
- Barthelemy, H., Stark, S., and Olofsson, J. 2015. Strong responses of sub-arctic plant communities to long-term reindeer feces manipulation. *Ecosystems*, **18**: 740–751. doi:10.1007/s10021-015-9856-y.
- Barthelemy, H., Stark, S., Michelsen, A., and Olofsson, J. 2018. Urine is an important nitrogen source for plants irrespective of vegetation composition in an Arctic tundra: insights from a <sup>15</sup>N-enriched urea tracer experiment. *Journal of Ecology*, **106**: 367–378. doi:10.1111/1365-2745.12820.
- Bauer, N., Wallner, A., and Hunziker, M. 2009. The change of European landscapes: human-nature relationships, public attitudes towards rewilding, and the implications for landscape management in Switzerland. *Journal of Environmental Management*, **90**: 2910–2920. doi:10.1016/j.jenvman.2008.01.021.
- Baztan, J., Cordier, M., Huctin, J.M., Zhu, Z., and Vanderlinden, J.P. 2017. Life on thin ice: insights from Uummannaq, Greenland for connect-

- ing climate science with Arctic communities. *Polar Science*, **13**: 100–108. doi:[10.1016/j.polar.2017.05.002](https://doi.org/10.1016/j.polar.2017.05.002).
- Beamish, A., Raynolds, M.K., Epstein, H., Frost, G.V., Macander, M.J., Bergstedt, H., et al. 2020. Recent trends and remaining challenges for optical remote sensing of Arctic tundra vegetation: a review and outlook. *Remote Sensing of Environment*, **246**: 111872. doi:[10.1016/j.rse.2020.111872](https://doi.org/10.1016/j.rse.2020.111872).
- Beard, K.H., Choi, R.T., Leffler, A.J., Carlson, L.G., Kelsey, K.C., Schmutz, J.A., and Welker, J.M. 2019a. Migratory goose arrival time plays a larger role in influencing forage quality than advancing springs in an Arctic coastal wetland. *PLoS ONE*, **14**: e0213037. doi:[10.1371/journal.pone.0213037](https://doi.org/10.1371/journal.pone.0213037).
- Beard, K.H., Kelsey, K.C., Leffler, A.J., and Welker, J.M. 2019b. The missing angle: ecosystem consequences of phenological mismatch. *Trends in Ecology & Evolution*, **34**: 885–888.
- Beard, K.H., Kelsey, K.C., Choi, R.T., Welker, J.M., and Leffler, A.J. 2023. Goose feces effects on subarctic soil nitrogen availability and greenhouse gas fluxes. *Ecosystems*, **26**: 187–200. doi:[10.1007/s10021-022-0075](https://doi.org/10.1007/s10021-022-0075).
- Beer, C., Zimov, N., Olofsson, J., Porada, P., and Zimov, S. 2020. Protection of permafrost soils from thawing by increasing herbivore density. *Scientific Reports*, **10**: 1–10. doi:[10.1038/s41598-020-60938-y](https://doi.org/10.1038/s41598-020-60938-y).
- Berkes, F., Colding, J., and Folke, C. 2000. Rediscovery of traditional ecological knowledge as adaptive management. *Ecological Applications*, **10**: 1251–1262. doi:[10.1890/1051-0761\(2000\)010%5b1251:ROTEKA%5d2.0.CO;2](https://doi.org/10.1890/1051-0761(2000)010%5b1251:ROTEKA%5d2.0.CO;2).
- Bilodeau, F., Gauthier, G., Fauteux, D., and Berteaux, D. 2014. Does lemming winter grazing impact vegetation in the Canadian Arctic? *Polar Biology*, **37**: 845–857. doi:[10.1007/s00300-014-1486-x](https://doi.org/10.1007/s00300-014-1486-x).
- Bjørndal, T., and Munro, G. 2012. The economics and management of world fisheries. Oxford University Press. doi:[10.1093/acprof:oso/9780199576753.001.0001](https://doi.org/10.1093/acprof:oso/9780199576753.001.0001).
- Boulanger, J., Kite, R., Campbell, M., Shaw, J., Lee, D., and Atkinson, S. 2024. Estimating the effects of roads on migration: a barren-ground caribou case study. *Canadian Journal of Zoology*, **102**: 476–493. doi:[10.1139/cjz-2023-0121](https://doi.org/10.1139/cjz-2023-0121).
- Brachmann, C.G., Vowles, T., Rinnan, R., Björkman, M.P., Ekberg, A., and Björk, R.G. 2023. Herbivore-shrub interactions influence ecosystem respiration and biogenic volatile organic compound composition in the subarctic. *Biogeosciences*, **20**: 4069–4086. doi:[10.5194/bg-20-4069-2023](https://doi.org/10.5194/bg-20-4069-2023).
- Bräthen, K.A., Ims, R.A., Yoccoz, N.G., Fauchald, P., Tveraa, T., and Hausner, V.H. 2007. Induced shift in ecosystem productivity? Extensive scale effects of abundant large herbivores. *Ecosystems*, **10**: 773–789. doi:[10.1007/s10021-007-9058-3](https://doi.org/10.1007/s10021-007-9058-3).
- Bräthen, K.A., Ravolainen, V.T., Stien, A., Tveraa, T., and Ims, R.A. 2017. *Rangifer* management controls a climate-sensitive tundra state transition. *Ecological Applications*, **27**: 2416–2427. doi:[10.1002/eap.1618](https://doi.org/10.1002/eap.1618).
- Brondizio, E.S., Aumeeruddy-Thomas, Y., Bates, P., Carino, J., Fernández-Llamazares, Á., Ferrari, M.F., et al. 2021. Locally based, regionally manifested, and globally relevant: Indigenous and local knowledge, values, and practices for nature. *Annual Review of Environment and Resources*, **46**: 481–509. doi:[10.1146/annurev-environ-012220-012127](https://doi.org/10.1146/annurev-environ-012220-012127).
- Burak, M.K., Ferraro, K.M., Orrick, K.D., Sommer, N.R., Ellis-Soto, D., and Schmitz, O.J. 2024. Context matters when rewilding for climate change. *People and Nature*, **6**: 507–518. doi:[10.1002/pan3.10609](https://doi.org/10.1002/pan3.10609).
- Cahoon, S.M.P., Sullivan, P.F., Post, E., and Welker, J.M. 2012. Large herbivores limit CO<sub>2</sub> uptake and suppress carbon cycle responses to warming in West Greenland. *Global Change Biology*, **18**: 469–479. doi:[10.1111/j.1365-2486.2011.02528.x](https://doi.org/10.1111/j.1365-2486.2011.02528.x).
- Choi, R.T., Beard, K.H., Leffler, A.J., Kelsey, K.C., Schmutz, J.A., and Welker, J.M. 2019. Phenological mismatch between season advancement and migration timing alters Arctic plant traits. *Journal of Ecology*, **107**: 2503–2518. doi:[10.1111/1365-2745.13191](https://doi.org/10.1111/1365-2745.13191).
- Christie, K.S., Bryant, J.P., Gough, L., Ravolainen, V.T., Ruess, R.W., and Tape, K.D. 2015. The role of vertebrate herbivores in regulating shrub expansion in the Arctic: a synthesis. *Bioscience*, **65**: 1123–1133. doi:[10.1093/biosci/biv137](https://doi.org/10.1093/biosci/biv137).
- Christie, K.S., Ruess, R.W., Lindberg, M.S., and Mulder, C.P. 2014. Herbivores influence the growth, reproduction, and morphology of a widespread Arctic willow. *PLoS ONE*, **9**: 1–9. doi:[10.1371/journal.pone.0101716](https://doi.org/10.1371/journal.pone.0101716).
- Christin, S., Hervet, É., and Lecomte, N. 2019. Applications for deep learning in ecology. *Methods in Ecology and Evolution*, **10**: 1632–1644. doi:[10.1111/2041-210X.13256](https://doi.org/10.1111/2041-210X.13256).
- Cohen, J., Pulliainen, J., Ménard, C.B., Johansen, B., Oksanen, L., Luojus, K., and Ikonen, J. 2013. Effect of reindeer grazing on snowmelt, albedo and energy balance based on satellite data analyses. *Remote Sensing of Environment*, **135**: 107–117. doi:[10.1016/j.rse.2013.03.029](https://doi.org/10.1016/j.rse.2013.03.029).
- Colman, J.E., Eftestøl, S., Tsegaye, D., Flydal, K., and Mysterud, A. 2013. Summer distribution of semi-domesticated reindeer relative to a new wind-power plant. *European Journal of Wildlife Research*, **59**: 359–370. doi:[10.1007/s10344-012-0682-7](https://doi.org/10.1007/s10344-012-0682-7).
- Conkin, J., and Alisauskas, R.T. 2017. Conversion of tundra to exposed peat habitat by snow geese (*Chen caerulescens caerulescens*) and Ross's geese (*C. rossii*) in the central Canadian Arctic. *Polar Biology*, **40**: 563–576. doi:[10.1007/s00300-016-1979-x](https://doi.org/10.1007/s00300-016-1979-x).
- Cromsigt, J.P.G.M., Beest, M.T., Kerley, G.I.H., Landman, M., Roux, E.L., and Smith, F.A. 2018. Trophic rewilding as a climate change mitigation strategy? *Philosophical Transactions of the Royal Society B: Biological Sciences*, **373**: 20170440. doi:[10.1098/rstb.2017.0440](https://doi.org/10.1098/rstb.2017.0440).
- Cucina, A., Cunsolo, V., Di Francesco, A., Saletti, R., Zilberstein, G., Zilberstein, S., et al. 2021. Meta-proteomic analysis of the Shandrin mammoth by EVA technology and high-resolution mass spectrometry: what is its gut microbiota telling us? *Amino Acids*, **53**: 1507–1521. doi:[10.1007/s00726-021-03061-0](https://doi.org/10.1007/s00726-021-03061-0).
- Cuyler, C., Rowell, J., Adamczewski, J., Anderson, M., Blake, J., Bretten, T., et al. 2020. Muskox status, recent variation, and uncertain future. *Ambio*, **49**: 805–819. doi:[10.1007/s13280-019-01205-x](https://doi.org/10.1007/s13280-019-01205-x).
- Dahlgren, J., Oksanen, L., Oksanen, T., Olofsson, J., Hambäck, P.A., and Lindgren, Å. 2009. Plant defences to no avail? Responses of plants of varying edibility to food web manipulations in a low arctic scrubland. *Evolutionary Ecology Research*, **11**: 1189–1203.
- Danell, K., Berteaux, D., and Bräthen, K.A. 2002. Effect of muskox carcasses on nitrogen concentration in tundra vegetation. *Arctic*, **55**: 389–392. doi:[10.14430/arctic723](https://doi.org/10.14430/arctic723).
- David-Chavez, D.M., and Gavin, M.C. 2018. A global assessment of indigenous community engagement in climate research. *Environmental Research Letters*, **13**: 123005. doi:[10.1088/1748-9326/aaf300](https://doi.org/10.1088/1748-9326/aaf300).
- Defourneaux, M., Barrio, I.C., Boulanger-Lapointe, N., and Speed, J.D.M. 2024. Long-term changes in herbivore community and vegetation impact of wild and domestic herbivores across Iceland. *Ambio*, **53**: 1124–1135. doi:[10.1007/s13280-024-01998-6](https://doi.org/10.1007/s13280-024-01998-6).
- Den Herder, M., Helle, S., Niemelä, P., Henttonen, H., and Helle, T. 2016. Large herbivore grazing limits small-mammal densities in Finnish Lapland. *Annales Zoologici Fennici*, **53**: 154–164. doi:[10.5735/086.053.0404](https://doi.org/10.5735/086.053.0404).
- Den Herder, M., Virtanen, R., and Roininen, H. 2004. Effects of reindeer browsing on tundra willow and its associated insect herbivores. *Journal of Applied Ecology*, **41**: 870–879. doi:[10.1111/j.0021-8901.2004.00952.x](https://doi.org/10.1111/j.0021-8901.2004.00952.x).
- Den Herder, M., Virtanen, R., and Roininen, H. 2008. Reindeer herbivory reduces willow growth and grouse forage in a forest-tundra ecotone. *Basic and Applied Ecology*, **9**: 324–331. doi:[10.1016/j.baee.2007.03.005](https://doi.org/10.1016/j.baee.2007.03.005).
- Deschamps, L., Maire, V., Chen, L., Fortier, D., Gauthier, G., Morneau, A., et al. 2023. Increased nutrient availability speeds up permafrost development, while goose grazing slows it down in a Canadian High Arctic wetland. *Journal of Ecology*, **111**: 449–463. doi:[10.1111/1365-2745.14037](https://doi.org/10.1111/1365-2745.14037).
- Dey, C.J., Rego, A.I., Midwood, J.D., and Koops, M.A. 2020. A review and meta-analysis of collaborative research prioritization studies in ecology, biodiversity conservation and environmental science. *Proceedings of the Royal Society B: Biological Sciences*, **287**: 20200012. doi:[10.1098/rspb.2020.0012](https://doi.org/10.1098/rspb.2020.0012).
- Di Francesco, J., Hanke, A., Milton, T., and Leclerc, L.-M. 2021. Documenting indigenous knowledge to identify and understand the stressors of muskoxen (*Ovibos moschatus*) in Nunavut, Canada. *Arctic*, **74**: 418–436. doi:[10.2307/27110551](https://doi.org/10.2307/27110551).
- Doiron, M., Gauthier, G., and Lévesque, E. 2014. Effects of experimental warming on nitrogen concentration and biomass of forage plants for an arctic herbivore. *Journal of Ecology*, **102**: 508–517. doi:[10.1111/1365-2745.12213](https://doi.org/10.1111/1365-2745.12213).

- Doiron, M., Gauthier, G., and Lévesque, E. 2015. Trophic mismatch and its effects on the growth of young in an Arctic herbivore. *Global Change Biology*, **21**: 4364–4376. doi:[10.1111/gcb.13057](https://doi.org/10.1111/gcb.13057).
- Domine, F., Gauthier, G., Vionnet, V., Fauteux, D., Dumont, M., and Barrere, M. 2018. Snow physical properties may be a significant determinant of lemming population dynamics in the high Arctic. *Arctic Science*, **4**: 813–826. doi:[10.11139/as-2018-0008](https://doi.org/10.11139/as-2018-0008).
- Duncan, R.J., Andrew, M.E., and Forchhammer, M.C. 2021. Snow mediates climatic impacts on Arctic herbivore populations. *Polar Biology*, **44**: 1251–1271. doi:[10.1007/s00300-021-02871-y](https://doi.org/10.1007/s00300-021-02871-y).
- Egelkraut, D., Kardol, P., De Long, J.R., and Olofsson, J. 2018. The role of plant–soil feedbacks in stabilizing a reindeer-induced vegetation shift in subarctic tundra. *Functional Ecology*, **32**: 1959–1971. doi:[10.1111/1365-2435.13113](https://doi.org/10.1111/1365-2435.13113).
- Ehlers, L., Palm, E., Herriges, J., Bentzen, T., Sutor, M., Joly, K., et al. 2024. A taste of space: remote animal observations and discrete-choice models provide new insights into foraging and density dynamics for a large subarctic herbivore. *Journal of Animal Ecology*, **93**: 891–905. doi:[10.1111/1365-2656.14109](https://doi.org/10.1111/1365-2656.14109).
- Ehrich, D., Schmidt, N.M., Gauthier, G., Alisauskas, R., Angerbjörn, A., Clark, K., et al. 2019. Documenting lemming population change in the Arctic: can we detect trends? *Ambio*, **49**(3): 786–800. doi:[10.1007/s13280-019-01198-7](https://doi.org/10.1007/s13280-019-01198-7).
- Eischeid, I., Soininen, E.M., Assmann, J.J., Ims, R.A., Madsen, J., Pedersen, Å., et al. 2021. Disturbance mapping in Arctic tundra improved by a planning workflow for drone studies: advancing tools for future ecosystem monitoring. *Remote Sensing*, **13**(21): 4466. doi:[10.3390/rs13214466](https://doi.org/10.3390/rs13214466).
- Elton, C.S. 1924. Periodic fluctuations in the numbers of animals: their causes and effects. *Journal of Experimental Biology*, **2**: 119–163. doi:[10.1242/jeb.2.1.119](https://doi.org/10.1242/jeb.2.1.119).
- Elton, C.S. 1927. *Animal ecology*. Macmillan Co., New York. doi:[10.5962/bhl.title.7435](https://doi.org/10.5962/bhl.title.7435).
- Eskelinen, A., Kaarlejärvi, E., and Olofsson, J. 2017. Herbivory and nutrient limitation protect warming tundra from lowland species' invasion and diversity loss. *Global Change Biology*, **23**: 245–255. doi:[10.1111/gcb.13397](https://doi.org/10.1111/gcb.13397).
- Falk, J.M., Schmidt, N.M., and Ström, L. 2014. Effects of simulated increased grazing on carbon allocation patterns in a high Arctic mire. *Biogeochemistry*, **119**: 229–244. doi:[10.1007/s10533-014-9962-5](https://doi.org/10.1007/s10533-014-9962-5).
- Fauchald, P., Park, T., Tømmervik, H., Myneni, R., and Hausner, V.H. 2017. Arctic greening from warming promotes declines in caribou populations. *Science Advances*, **3**: e1601365.
- Ferraro, K.M., Albrecht, D., Hendrix, J.G., Wal, E.V., Schmitz, O.J., Webber, Q.M.R., and Bradford, M.A. 2024. The biogeochemical boomerang: site fidelity creates nutritional hotspots that may promote recurrent calving site reuse. *Ecology Letters*, **27**. doi:[10.1111/ele.14491](https://doi.org/10.1111/ele.14491).
- Ferraro, K.M., Ferraro, A.L., and Sommer, N.R. 2021. Challenges facing cross-disciplinary collaboration in conservation ethics. *Conservation Science and Practice*, **3**: e523.
- Ferraro, K.M., Schmitz, O.J., and McCary, M.A. 2022. Effects of ungulate density and sociality on landscape heterogeneity: a mechanistic modeling approach. *Ecography*, **2022**(2): e06039. doi:[10.1111/ecog.06039](https://doi.org/10.1111/ecog.06039).
- Festa-Bianchet, M., Ray, J.C., Boutin, S., Côté, S.D., and Gunn, A. 2011. Conservation of caribou (*Rangifer tarandus*) in Canada: an uncertain future. *Canadian Journal of Zoology*, **89**(5): 419–434. doi:[10.1139/Z11-025](https://doi.org/10.1139/Z11-025).
- Filella, J.B., Quispe Bonilla, C.C., Quispe, E., and Dalerum, F. 2023. Artificial intelligence as a potential tool for micro-histological analysis of herbivore diets. *European Journal of Wildlife Research*, **69**: 11. doi:[10.1007/s10344-022-01640-4](https://doi.org/10.1007/s10344-022-01640-4).
- Finger-Higgins, R., Melissa, H., Matthew, D., and Virginia, R.A. 2021. Increasing shrub damage by invertebrate herbivores in the warming and drying tundra of West Greenland. *Oecologia*, **195**(4): 995–1005. doi:[10.1007/s00442-021-04899-7](https://doi.org/10.1007/s00442-021-04899-7).
- Fischer, W., Thomas, C.K., Zimov, N., and Göckede, M. 2022. Grazing enhances carbon cycling but reduces methane emission during peak growing season in the Siberian Pleistocene Park tundra site. *Biogeosciences*, **19**: 1611–1633. doi:[10.5194/bg-19-1611-2022](https://doi.org/10.5194/bg-19-1611-2022).
- Forbes, B.C., and Kumpula, T. 2009. The ecological role and geography of reindeer (*Rangifer tarandus*) in Northern Eurasia. *Geography Compass*, **3**: 1356–1380. doi:[10.1111/j.1749-8198.2009.00250.x](https://doi.org/10.1111/j.1749-8198.2009.00250.x).
- Forbes, B.C., Kumpula, T., Meschytyb, N., Laptander, R., MacIas-Fauria, M., Zetterberg, P., et al. 2016. Sea ice, rain-on-snow and tundra reindeer nomadism in Arctic Russia. *Biology Letters*, **12**: 4–8. doi:[10.1098/rsbl.2016.0466](https://doi.org/10.1098/rsbl.2016.0466).
- Forbes, B.C., Stammer, F., Kumpula, T., Meschytyb, N., Pajunen, A., and Kaarlejärvi, E. 2009. High resilience in the Yamal-Nenets social-ecological system, West Siberian Arctic, Russia. *Proceedings of the National Academy of Sciences*, **106**: 22041–22048. doi:[10.1073/pnas.0908286106](https://doi.org/10.1073/pnas.0908286106).
- Ford, J.D., King, N., Galappaththi, E.K., Pearce, T., McDowell, G., and Harper, S.L. 2020. The resilience of Indigenous Peoples to environmental change. *One Earth*, **2**: 532–543. doi:[10.1016/j.oneear.2020.05.014](https://doi.org/10.1016/j.oneear.2020.05.014).
- Frost, C.M., Allen, W.J., Courchamp, F., Jeschke, J.M., Saul, W.-C., and Wardle, D.A. 2019. Using network theory to understand and predict biological invasions. *Trends in Ecology & Evolution*, **34**: 831–843. doi:[10.1016/j.tree.2019.04.012](https://doi.org/10.1016/j.tree.2019.04.012).
- Fullman, T.J., Joly, K., and Ackerman, A. 2017. Effects of environmental features and sport hunting on caribou migration in northwestern Alaska. *Movement Ecology*, **5**. doi:[10.1186/s40462-017-0095-z](https://doi.org/10.1186/s40462-017-0095-z).
- Gagnon, C.A., Hamel, S., Russell, D.E., Andre, J., Buckle, A., Haogak, D., et al. 2023. Climate, caribou and human needs linked by analysis of Indigenous and scientific knowledge. *Nature Sustainability*, **6**: 769–779. doi:[10.1038/s41893-023-01085-w](https://doi.org/10.1038/s41893-023-01085-w).
- Gauthier, G., Berteaux, D., Bêty, J., Legagneux, P., Fauteux, D., Gravel, D., and Cadieux, M.-C. 2024. Scientific contributions and lessons learned from 30 years of ecological monitoring of the Bylot Island tundra ecosystem. *Frontiers in Ecology and Evolution*, **12**. doi:[10.3389/fevo.2024.1359745](https://doi.org/10.3389/fevo.2024.1359745).
- Gauthier, G., Berteaux, D., Bêty, J., Tarroux, A., Therrien, J.-F., McKinnon, L., et al. 2011. The tundra food web of Bylot Island in a changing climate and the role of exchanges between ecosystems. *Écoscience*, **18**: 223–235. doi:[10.2980/18-3-3453](https://doi.org/10.2980/18-3-3453).
- Gibson, K., Olofsson, J., Mooers, A.Ø., and Monroe, M.J. 2021. Pulse grazing by reindeer (*Rangifer tarandus*) can increase the phylogenetic diversity of vascular plant communities in the Fennoscandian tundra. *Ecology and Evolution*, **11**: 14598–14614. doi:[10.1002/ece3.8131](https://doi.org/10.1002/ece3.8131).
- Gilg, O., Hanski, I., and Sittler, B. 2003. Cyclic dynamics in a simple vertebrate predator-prey community. *Science*, **302**: 866–868. doi:[10.1126/science.1087509](https://doi.org/10.1126/science.1087509).
- Gosselin, F., Cordonnier, T., Bilger, I., Jappiot, M., Chauvin, C., and Gosselin, M. 2018. Ecological research and environmental management: we need different interfaces based on different knowledge types. *Journal of Environmental Management*, **218**: 388–401. doi:[10.1016/j.jenvman.2018.04.025](https://doi.org/10.1016/j.jenvman.2018.04.025).
- Gruyer, N., Gauthier, G., and Berteaux, D. 2008. Cyclic dynamics of sympatric lemming populations on Bylot Island, Nunavut, Canada. *Canadian Journal of Zoology*, **86**: 910–917.
- Gunton, C., and Markey, S. 2021. The role of community benefit agreements in natural resource governance and community development: issues and prospects. *Resources Policy*, **73**: 102152. doi:[10.1016/j.resourpol.2021.102152](https://doi.org/10.1016/j.resourpol.2021.102152).
- Gustine, D., Barboza, P., Adams, L., Griffith, B., Cameron, R., and Whitten, K. 2017. Advancing the match-mismatch framework for large herbivores in the Arctic: evaluating the evidence for a trophic mismatch in caribou. *PLoS ONE*, e0171807, **12**. doi:[10.1371/journal.pone.0171807](https://doi.org/10.1371/journal.pone.0171807).
- Hamel, S., Ims, R., and Yoccoz, N. 2022. Challenges and opportunities when implementing strategic foresight: lessons learned when engaging stakeholders in climate-ecological research. *Climate Research*, **86**: 29–35. doi:[10.3354/cr01653](https://doi.org/10.3354/cr01653).
- Hansen, B.B., Aanes, R., Herfindal, I., Kohler, J., Sæther, B.E., and Oli, M.K. 2011. Climate, icing, and wild arctic reindeer: past relationships and future prospects. *Ecology*, **92**: 1917–1923. doi:[10.1890/11-0095.1](https://doi.org/10.1890/11-0095.1).
- Hansen, B.B., Gamelon, M., Albon, S.D., Lee, A.M., Stien, A., Irvine, R.J., et al. 2019a. More frequent extreme climate events stabilize reindeer population dynamics. *Nature Communications*, **10**: 1616. doi:[10.1038/s41467-019-09332-5](https://doi.org/10.1038/s41467-019-09332-5).
- Hansen, B.B., Pedersen, Å.Ø., Peeters, B., Le Moullec, M., Albon, S.D., Herfindal, I., et al. 2019b. Spatial heterogeneity in climate change effects decouples the long-term dynamics of wild reindeer populations in the high Arctic. *Global Change Biology*, **25**: 3656–3668. doi:[10.1111/gcb.14761](https://doi.org/10.1111/gcb.14761).

- Hansen, B.B., Grøtan, V., Aanes, R., Sæther, B.-E., Stien, A., Fuglei, E., et al. 2013. Climate events synchronize the dynamics of a resident vertebrate community in the high Arctic. *Science*, **339**: 313–315. doi:10.1126/science.1226766.
- Heininen, L., Everett, K., Padrtova, B., and Reissell, A. 2020. Arctic policies and strategies-analysis, synthesis, and trends. Laxenburg, Austria. doi:10.22022/AFI/11-2019.16175.
- Henden, J., Ims, R.A., Yoccoz, N.G., Asbjørnsen, E.J., Stien, A., Mellard, J.P., et al. 2020. End-user involvement to improve predictions and management of populations with complex dynamics and multiple drivers. *Ecological Applications*, **30**. doi:10.1002/eap.2120.
- Henry, G.H.R., Hollister, R.D., Klanderud, K., Björk, R.G., Bjorkman, A.D., Elphinstone, C., et al. 2022. The International Tundra Experiment (ITEX): 30 years of research on tundra ecosystems. *Arctic Science*, **8**: 550–571. doi:10.1139/as-2022-0041.
- Hill, R., Adem, Ç., Alangui, W.V., Molnár, Z., Aumeeruddy-Thomas, Y., Bridgewater, P., et al. 2020. Working with Indigenous, local and scientific knowledge in assessments of nature and nature's linkages with people. *Current Opinion in Environmental Sustainability*, **43**: 8–20. doi:10.1016/j.cosust.2019.12.006.
- Hiltunen, T.A., Stien, A., Väisänen, M., Ropstad, E., Aspi, J.O., and Welker, J.M. 2022. Svalbard reindeer winter diets: Long-term dietary shifts to graminoids in response to a changing climate. *Global Change Biology*, **28**(23): 7009–7022. doi:10.1111/gcb.16420.
- Holand, Ø., Horstkotte, T., Kumpula, J., and Moen, J. 2022. Reindeer pastoralism in Fennoscandia. In *Reindeer husbandry and global environmental change: pastoralism in Fennoscandia*. Taylor and Francis. pp. 7–47. doi:10.4324/9781003118565-3.
- Holmgren, M., Groten, F., Carracedo, M.R., Vink, S., and Limpens, J. 2023. Rewilding risks for peatland permafrost. *Ecosystems*, **26**: 1806–1818. doi:10.1007/s10021-023-0086.
- Horstkotte, T., Kumpula, J., Sandström, P., Tømmervik, H., Kivinen, S., Skarin, A., et al. 2022. Pastures under pressure: effects of other land users and the environment. In *Reindeer husbandry and global environmental change: pastoralism in Fennoscandia*. Taylor and Francis. pp. 76–98. doi:10.4324/9781003118565-7.
- Huntington, H.P., Anisimova, O., Christensen, T., Fenge, A., Hoel, A.H., Jung, T., et al. 2013. Provisioning and cultural services. In *Arctic biodiversity assessment. Status and trends in Arctic biodiversity. Conservation of Arctic flora and fauna*, Akureyri.
- Hupp, J.W., Ward, D.H., Soto, D.X., and Hobson, K.A. 2018. Spring temperature, migration chronology, and nutrient allocation to eggs in three species of Arctic-nesting geese: implications for resilience to climate warming. *Global Change Biology*, **24**: 5056–5071. doi:10.1111/gcb.14418.
- Huusko, K., Manninen, O.H., Myrsky, E., and Stark, S. 2024. Soil fungal and bacterial communities reflect differently tundra vegetation state transitions and soil physico-chemical properties. *New Phytologist*, **243**(1): 407–422. doi:10.1111/nph.19808.
- Ims, R.A., and Fuglei, E. 2005. Trophic interaction cycles in tundra ecosystems and the impact of climate change. *Bioscience*, **55**: 311–322. doi:10.1641/0006-3568(2005)055[0311:TICITE]2.0.CO;2.
- Ims, R.A., and Yoccoz, N.G. 2017. Ecosystem-based monitoring in the age of rapid climate change and new technologies. *Current Opinion in Environmental Sustainability*, **29**: 170–176. doi:10.1016/j.cosust.2018.01.003.
- IPCC [Intergovernmental Panel on Climate Change (IPCC)]. 2021. *Climate Change 2021—The Physical Science Basis*. Cambridge University Press. doi:10.1017/9781009157896.
- Ivanov, V.Y., Ungar, P.S., Ziker, J.P., Abdulmanova, S., Celis, G., Dixon, A., et al. 2024. A convergence science approach to understanding the changing Arctic. *Earth's Future*, **12**. doi:10.1029/2023EF004157.
- Iversen, M., Fauchald, P., Langeland, K., Ims, R.A., Yoccoz, N.G., and Bråthen, K.A. 2014. Phenology and cover of plant growth forms predict herbivore habitat selection in a high latitude ecosystem. *PLoS ONE*, **9**: e100780. doi:10.1371/journal.pone.0100780.
- Jefferies, R.L., Jano, A.P., and Abraham, K.F. 2006. A biotic agent promotes large-scale catastrophic change in the coastal marshes of Hudson Bay. *Journal of Ecology*, **94**: 234–242. doi:10.1111/j.1365-2745.2005.01086.x.
- Jepsen, J.U., Vindstad, O.P.L., and Ims, R.A. 2023. Spatiotemporal dynamics of forest geometrid outbreaks. *Current Opinion in Insect Science*, **55**: 100990. doi:10.1016/j.cois.2022.100990.
- Jessen, M.T., Kaarlejärvi, E., Olofsson, J., and Eskelinen, A. 2020. Mammalian herbivory shapes intraspecific trait responses to warmer climate and nutrient enrichment. *Global Change Biology*, **26**(12): 6742–6752. doi:10.1111/gcb.15378.
- Jessen, T.D., Ban, N.C., Claxton, N.X., and Darimont, C.T. 2022. Contributions of Indigenous Knowledge to ecological and evolutionary understanding. *Frontiers in Ecology and the Environment*, **20**: 93–101. doi:10.1002/fee.2435.
- Johnson, C.J., and Russell, D.E. 2014. Long-term distribution responses of a migratory caribou herd to human disturbance. *Biological Conservation*, **177**: 52–63. doi:10.1016/j.biocon.2014.06.007.
- Johnson, H.E., Golden, T.S., Adams, L.G., Gustine, D.D., and Lenart, E.A. 2020. Caribou use of habitat near energy development in Arctic Alaska. *The Journal of Wildlife Management*, **84**: 401–412. doi:10.1002/jwmg.21809.
- Johnson, H.E., Golden, T.S., Adams, L.G., Gustine, D.D., Lenart, E.A., and Barboza, P.S. 2021. Dynamic selection for forage quality and quantity in response to phenology and insects in an Arctic ungulate. *Ecology and Evolution*, **11**: 11664–11688. doi:10.1002/ece3.7852.
- Johnson, L.R., Wilcox, A.A.E., Alexander, S.M., Bowles, E., Castleden, H., Henri, D.A., et al. 2023. Weaving Indigenous and Western ways of knowing in ecotoxicology and wildlife health: a review of Canadian studies. *Environmental Reviews*, **31**(3): 452–470. doi:10.1139/er-2022-0087.
- Joly, K., Jandt, R.R., and Klein, D.R. 2009. Decrease of lichens in Arctic ecosystems: the role of wildfire, caribou, reindeer, competition and climate in north-western Alaska. *Polar Research*, **28**(3): 433–442. doi:10.1111/j.1751-8369.2009.00113.x.
- Justice, D.H. 2018. Why Indigenous literatures matter. Wilfrid Laurier University Press. doi:10.51644/9781771121774.
- Kaarlejärvi, E., Eskelinen, A., and Olofsson, J. 2013. Herbivory prevents positive responses of lowland plants to warmer and more fertile conditions at high altitudes. *Functional Ecology*, **27**: 1244–1253. doi:10.1111/1365-2435.12113.
- Kaarlejärvi, E., Eskelinen, A., and Olofsson, J. 2017. Herbivores rescue diversity in warming tundra by modulating trait-dependent species losses and gains. *Nature Communications*, **8**: 419. doi:10.1038/s41467-017-00554-z.
- Kaarlejärvi, E., Hoset, K.S., and Olofsson, J. 2015. Mammalian herbivores confer resilience of Arctic shrub-dominated ecosystems to changing climate. *Global Change Biology*, **21**: 3379–3388. doi:10.1111/gcb.12970.
- Kamenova, S., Meyer, P., Brysting, A.K., Rescia, L., Folkow, L.P., Sundset, M.A., et al. 2024. DNA metabarcoding diet analysis in ruminants is quantitative and integrates feeding over several weeks. *BioRxiv*. doi:10.1101/2024.02.01.577814.
- Kankaanpää, T., Vesterinen, E., Hardwick, B., Schmidt, N.M., Andersson, T., Aspholm, P.E., et al. 2020. Parasitoids indicate major climate-induced shifts in arctic communities. *Global Change Biology*, **26**(11): 6276–6295. doi:10.1111/gcb.15297.
- Karolyi, G.A., and Tobin-de la Puente, J. 2023. Biodiversity finance: a call for research into financing nature. *Financial Management*, **52**: 231–251. doi:10.1111/fima.12417.
- Kater, I. 2022. Natural and Indigenous sciences: reflections on an attempt to collaborate. *Regional Environmental Change*, **22**: 109. doi:10.1007/s10113-022-01967-3.
- Kerby, J., and Post, E. 2013a. Capital and income breeding traits differentiate trophic match–mismatch dynamics in large herbivores. *Philosophical Transactions of the Royal Society B: Biological Sciences*, **368**: 20120484. doi:10.1098/rstb.2012.0484.
- Kerby, J.T., and Post, E. 2013b. Advancing plant phenology and reduced herbivore production in a terrestrial system associated with sea ice decline. *Nature Communications*, **4**: 2514. doi:10.1038/ncomms3514.
- Kissling, W.D., Dalby, L., Fløjgaard, C., Lenoir, J., Sandel, B., and Sandom, C., 2014. Establishing macroecological trait datasets: digitalization, extrapolation, and validation of diet preferences in terrestrial mammals worldwide. *Ecology and Evolution*, **4**: 2913–2930. doi:10.1002/ece3.1136.
- Klein, D.R. 2000. Arctic grazing systems and industrial development: can we minimize conflicts? *Polar Research*, **19**: 91–98. doi:10.3402/polar.v19i1.6534.
- Koltz, A.M., Asmus, A., Gough, L., Pressler, Y., and Moore, J.C. 2017. The detritus-based microbial-invertebrate food web contributes dispro-

- portionately to carbon and nitrogen cycling in the Arctic. *Polar Biology*, **41**: 1531–1545. doi:[10.1007/s00300-017-2201-5](https://doi.org/10.1007/s00300-017-2201-5).
- Koltz, A.M., Gough, L., and McLaren, J.R. 2022. Herbivores in Arctic ecosystems: effects of climate change and implications for carbon and nutrient cycling. *Annals of the New York Academy of Sciences*, **1516**: 28–47. doi:[10.1111/nyas.14863](https://doi.org/10.1111/nyas.14863).
- Kristensen, J.A., Michelsen, A., and Metcalfe, D.B. 2020. Background insect herbivory increases with local elevation but makes minor contribution to element cycling along natural gradients in the Subarctic. *Ecology and Evolution*, **10**: 11684–11698. doi:[10.1002/ece3.6803](https://doi.org/10.1002/ece3.6803).
- Lameris, T.K., van der Jeugd, H.P., Eichhorn, G., Dokter, A.M., Bouten, W., and Boom, M.P., 2018. Arctic geese tune migration to a warming climate but still suffer from a phenological mismatch. *Current Biology*, **28**: 2467–2473.e4. doi:[10.1016/j.cub.2018.05.077](https://doi.org/10.1016/j.cub.2018.05.077). PMID: 30033332.
- Laptander, R. 2023. The Yamal Nenets' traditional and contemporary environmental knowledge of snow, ice, and permafrost. *Ecology and Society*, **28**. doi:[10.5751/ES-14353-280306](https://doi.org/10.5751/ES-14353-280306).
- Lara, M.J., Johnson, D.R., Andresen, C., Hollister, R.D., and Tweedie, C.E. 2017. Peak season carbon exchange shifts from a sink to a source following 50+ years of herbivore exclusion in an Arctic tundra ecosystem. *Journal of Ecology*, **105**: 122–131. doi:[10.1111/1365-2745.12654](https://doi.org/10.1111/1365-2745.12654).
- Larsson Blind, Å. 2022. Pathways for action: the need for Sámi self-determination. In *Reindeer husbandry and global environmental change: pastoralism in Fennoscandia*. Taylor and Francis. pp. 278–288. doi:[10.4324/9781003118565-21](https://doi.org/10.4324/9781003118565-21).
- Lépy, É., Heikkinen, H.I., Komu, T., and Sarkki, S. 2018. Participatory meaning making of environmental and cultural changes in reindeer herding in the northernmost border area of Sweden and Finland. *International Journal of Business and Globalisation*, **20**(2): 203.
- Li, T., Holst, T., Michelsen, A., and Rinnan, R. 2019. Amplification of plant volatile defence against insect herbivory in a warming Arctic tundra. *Nature Plants*, **5**: 568–574. doi:[10.1038/s41477-019-0439-3](https://doi.org/10.1038/s41477-019-0439-3).
- Lindenmayer, D.B., Likens, G.E., Haywood, A., and Mieziš, L. 2011. Adaptive monitoring in the real world: proof of concept. *Trends in Ecology & Evolution*, **26**: 641–646. doi:[10.1016/j.tree.2011.08.002](https://doi.org/10.1016/j.tree.2011.08.002).
- Loe, L.E., Hansen, B.B., Stien, A., Albon, S.D., Bischof, R., and Carlsson, A., 2016. Behavioral buffering of extreme weather events in a high-Arctic herbivore. *Ecosphere*, **7**. doi:[10.1002/ecs2.1374](https://doi.org/10.1002/ecs2.1374).
- Loe, L.E., Liston, G.E., Pigeon, G., Barker, K., Horvitz, N., Stien, A., et al. 2021. The neglected season: Warmer autumns counteract harsher winters and promote population growth in Arctic reindeer. *Global Change Biology*, **27**(5): 993–1002. doi:[10.1111/gcb.15458](https://doi.org/10.1111/gcb.15458).
- Lund, M., Raundrup, K., Westergaard-Nielsen, A., López-Blanco, E., Nyman, J., and Aastrup, P. 2017. Larval outbreaks in West Greenland: instant and subsequent effects on tundra ecosystem productivity and CO<sub>2</sub> exchange. *Ambio*, **46**: 26–38. doi:[10.1007/s13280-016-0863-9](https://doi.org/10.1007/s13280-016-0863-9). PMID: 28116687.
- Macias-Fauria, M., Jepson, P., Zimov, N., and Malhi, Y. 2020. Pleistocene Arctic megafaunal ecological engineering as a natural climate solution? *Philosophical Transactions of the Royal Society B: Biological Sciences*, **375**: 20190122. doi:[10.1098/rstb.2019.0122](https://doi.org/10.1098/rstb.2019.0122).
- Mallory, C.D., and Boyce, M.S. 2018. Observed and predicted effects of climate change on Arctic caribou and reindeer. *Environmental Reviews*, **26**: 13–25. doi:[10.1139/er-2017-0032](https://doi.org/10.1139/er-2017-0032).
- Marolla, F., Henden, J., Fuglei, E., Pedersen, Å.Ø., Itkin, M., and Ims, R.A. 2021. Iterative model predictions for wildlife populations impacted by rapid climate change. *Global Change Biology*, **27**: 1547–1559. doi:[10.1111/gcb.15518](https://doi.org/10.1111/gcb.15518).
- McKendrick, J.D., Batzli, G.O., Everett, K.R., and Swanson, J.C. 1980. Some effects of mammalian herbivores and fertilization on tundra soils and vegetation. *Arctic and Alpine Research*, **12**: 565–578. doi:[10.2307/1550501](https://doi.org/10.2307/1550501).
- Mellard, J.P., Henden, J.A., Pedersen, Å.Ø., Marolla, F., Hamel, S., Yoccoz, N.G., and Ims, R.A. 2022. Food web approach for managing Arctic wildlife populations in an era of rapid environmental change. *Climate Research*, **86**: 163–178. doi:[10.3354/cr01638](https://doi.org/10.3354/cr01638).
- Metcalfe, D.B., Hermans, T.D.G., Ahlstrand, J., Becker, M., Berggren, M., and Björk, R.G., 2018. Patchy field sampling biases understanding of climate change impacts across the Arctic. *Nature Ecology & Evolution*, **2**: 1443–1448. doi:[10.1038/s41559-018-0612-5](https://doi.org/10.1038/s41559-018-0612-5).
- Moen, J., Andersen, R., and Illius, A.W. 2006. Living in a seasonal environment. In *Large herbivore ecology, ecosystem dynamics and conservation*. Edited by K. Danell, P. Duncan, R. Bergström and J. Pastor. Cambridge University Press, Cambridge. pp. 50–70. doi:[10.1017/CBO9780511617461](https://doi.org/10.1017/CBO9780511617461).
- Moen, J., Cairns, D.M., and Lafon, C.W. 2008. Factors structuring the tree-line ecotone in Fennoscandia. *Plant Ecology & Diversity*, **1**: 77–87. doi:[10.1080/17550870802246664](https://doi.org/10.1080/17550870802246664).
- Moirano, R., Sánchez, M.A., and Štěpánek, L. 2020. Creative interdisciplinary collaboration: a systematic literature review. *Thinking Skills and Creativity*, **35**: 100626. doi:[10.1016/j.tsc.2019.100626](https://doi.org/10.1016/j.tsc.2019.100626).
- Monteath, A.J., Gaglioti, B.V., Edwards, M.E., and Froese, D. 2021. Late Pleistocene shrub expansion preceded megafauna turnover and extinctions in eastern Beringia. *Proceedings of the National Academy of Sciences*, **118**. doi:[10.1073/pnas.2107977118](https://doi.org/10.1073/pnas.2107977118).
- Mukherjee, N., Hugé, J., Sutherland, W.J., McNeill, J., Van Opstal, M., Dahdouh-Guebas, F., and Koedam, N. 2015. The Delphi technique in ecology and biological conservation: applications and guidelines. *Methods in Ecology and Evolution*, **6**: 1097–1109. doi:[10.1111/2041-210X.12387](https://doi.org/10.1111/2041-210X.12387).
- Myers-Smith, I.H., Kerby, J.T., Phoenix, G.K., Bjerke, J.W., Epstein, H.E., Assmann, J.J., et al. 2020. Complexity revealed in the greening of the Arctic. *Nature Climate Change*, **10**: 106–117. doi:[10.1038/s41558-019-0688-1](https://doi.org/10.1038/s41558-019-0688-1).
- Mysterud, A., and Rolandsen, C.M. 2018. A reindeer cull to prevent chronic wasting disease in Europe. *Nature Ecology & Evolution*, **2**(9): 1343–1345. doi:[10.1038/s41559-018-0616-1](https://doi.org/10.1038/s41559-018-0616-1).
- Mysterud, A., Tranulis, M.A., Strand, O., and Rolandsen, C.M. 2024. Lessons learned and lingering uncertainties after seven years of chronic wasting disease management in Norway. *Wildlife Biology*, e01255. doi:[10.1002/wlb3.01255](https://doi.org/10.1002/wlb3.01255).
- Naylor, A.W., Ford, J.D., Pearce, T., Fawcett, D., Clark, D., and van Alstine, J. 2021. Monitoring the dynamic vulnerability of an Arctic subsistence food system to climate change: the case of Ulukhaktok, NT. *PLoS ONE*, **16**: e0258048. doi:[10.1371/journal.pone.0258048](https://doi.org/10.1371/journal.pone.0258048).
- Neby, M., Ims, R.A., Kamenova, S., Devineau, O., and Soininen, E.M. 2024. Is the diet cyclic phase-dependent in boreal vole populations? *Ecology and Evolution*, **14**. doi:[10.1002/ece3.11227](https://doi.org/10.1002/ece3.11227).
- Niebuhr, B.B., Van Moorter, B., Stien, A., Tveraa, T., Strand, O., Langeland, K., et al. 2023. Estimating the cumulative impact and zone of influence of anthropogenic features on biodiversity. *Methods in Ecology and Evolution*, **14**: 2362–2375. doi:[10.1111/2041-210X.14133](https://doi.org/10.1111/2041-210X.14133).
- Normand, S., Høye, T.T., Forbes, B.C., Bowden, J.J., and Davies, A.L. 2017. Legacies of historical human activities in Arctic woody plant dynamics. *Annual Review of Environment and Resources*, **42**: 541–567. doi:[10.1146/annurev-environ-110615-085454](https://doi.org/10.1146/annurev-environ-110615-085454).
- Oksanen, T., Oksanen, L., Vuorinen, K.E.M., Wolf, C., Mäkynen, A., Olofsson, J., et al. 2020. The impact of thermal seasonality on terrestrial endotherm food web dynamics: a revision of the exploitation ecosystem hypothesis. *Ecography*, **43**: 1859–1877. doi:[10.1111/ecog.05076](https://doi.org/10.1111/ecog.05076).
- Olofsson, J., and Post, E. 2018. Effects of large herbivores on tundra vegetation in a changing climate, and implications for rewilding. *Philosophical Transactions of the Royal Society B: Biological Sciences*, **373**: 20170437. doi:[10.1098/rstb.2017.0437](https://doi.org/10.1098/rstb.2017.0437).
- Olofsson, J., Oksanen, L., Callaghan, T., Hulme, P.E., Oksanen, T., and Suominen, O. 2009. Herbivores inhibit climate-driven shrub expansion on the tundra. *Global Change Biology*, **15**: 2681–2693. doi:[10.1111/j.1365-2486.2009.01935.x](https://doi.org/10.1111/j.1365-2486.2009.01935.x).
- Olofsson, J., Stark, S., and Oksanen, L. 2004. Reindeer influence on ecosystem processes in the tundra. *Oikos*, **105**: 386–396. doi:[10.1111/j.0030-1299.2004.13048.x](https://doi.org/10.1111/j.0030-1299.2004.13048.x).
- Olofsson, J., Tømmervik, H., and Callaghan, T.V. 2012. Vole and lemming activity observed from space. *Nature Climate Change*, **2**: 880–883. doi:[10.1038/nclimate1537](https://doi.org/10.1038/nclimate1537).
- Owen-Smith, N. 1987. Pleistocene extinctions: the pivotal role of megaherbivores. *Paleobiology*, **13**: 351–362. doi:[10.1017/S0094837300008927](https://doi.org/10.1017/S0094837300008927).
- Pansu, J., Hutchinson, M.C., Anderson, T.M., Te Beest, M., Begg, C.M., Begg, K.S., et al. 2022. The generality of cryptic dietary niche differences in diverse large-herbivore assemblages. *Proceedings of the National Academy of Sciences*, **119**: e2204400119. doi:[10.1073/pnas](https://doi.org/10.1073/pnas).
- Parlee, B., Manseau, M., and Dene First Nation, L.K. 2005. Using traditional knowledge to adapt to ecological change: Denésoliné monitoring of caribou movements. *Arctic*, **58**. doi:[10.14430/arctic386](https://doi.org/10.14430/arctic386).

- Parlee, B.L., Sandlos, J., and Natcher, D.C. 2018. Undermining subsistence: barren-ground caribou in a "tragedy of open access". *Science Advances*, **4**. doi:10.1126/sciadv.1701611.
- Peacock, S.J., Mavrot, F., Tomaselli, M., Hanke, A., Fenton, H., and Nathoo, R., 2020. Linking co-monitoring to co-management: bringing together local, traditional, and scientific knowledge in a wildlife status assessment framework. *Arctic Science*, **6**: 247–266. doi:10.1139/as-2019-0019.
- Pearce, T., Ford, J., Willox, A.C., and Smit, B. 2015. Inuit traditional ecological knowledge (TEK), subsistence hunting and adaptation to climate change in the Canadian arctic. *Arctic*, **68**: 233–245. doi:10.14430/arctic4475.
- Pedersen, Å.Ø., Stien, J., Albon, S., Fuglei, E., Isaksen, K., Liston, G., et al. 2019. Climate-Ecological Observatory for Arctic Tundra (COAT). State of Environmental Science in Svalbard (SESS) Report [online]. Available from www.coat.no.
- Pedersen, C., Otokiak, M., Koonoo, I., Milton, J., Maktar, E., Anaviapik, A., et al. 2020. SciQ: an invitation and recommendations to combine science and Inuit Qaujimagatuqangit for meaningful engagement of inuit communities in research. *Arctic Science*, **6**: 326–339. doi:10.1139/as-2020-0015.
- Petit Bon, M., Gunnarsdotter, I.K., Jónsdóttir, I.S., Utsi, T.A., Soininen, E.M., and Bräthen, K.A. 2020. Interactions between winter and summer herbivory affect spatial and temporal plant nutrient dynamics in tundra grassland communities. *Oikos*, **129**: 1229–1242. doi:10.1111/oik.07074.
- Petit Bon, M., Gunnarsdotter, I.K., Utsi, T.A., Jónsdóttir, I.S., and Bräthen, K.A. 2022. Forage quality in tundra grasslands under herbivory: silicon-based defences, nutrients and their ratios in grasses. *Journal of Ecology*, **110**: 129–143. doi:10.1111/1365-2745.13790.
- Pichon, N.A., Kaarlejärvi, E., and Eskelinen, A. 2023. Seed limitation interacts with biotic and abiotic factors to constrain novel species' impact on community biomass and richness. *Ecology Letters*, **26**: 908–918. doi:10.1111/ele.14219.
- Pickles, R.S.A., Thornton, D., Feldman, R., Marques, A., and Murray, D.L. 2013. Predicting shifts in parasite distribution with climate change: a multitrophic level approach. *Global Change Biology*, **19**: 2645–2654. doi:10.1111/gcb.12255.
- Plante, S., Dussault, C., Richard, J.H., and Côté, S.D. 2018. Human disturbance effects and cumulative habitat loss in endangered migratory caribou. *Biological Conservation*, **224**: 129–143. doi:10.1016/j.biocon.2018.05.022.
- Poirier, M., Gauthier, G., Domine, F., and Fauteux, D. 2023. Lemming winter habitat: the quest for warm and soft snow. *Oecologia*, **202**(2): 211–225. doi:10.1007/s00442-023-05385-y. PMID: 37351629.
- Polling, M., ter Schure, A.T.M., van Geel, B., van Bokhoven, T., Boessenkool, S., MacKay, G., et al. 2021. Multiproxy analysis of permafrost preserved faeces provides an unprecedented insight into the diets and habitats of extinct and extant megafauna. *Quaternary Science Reviews*, **267**: 107084. doi:10.1016/j.quascirev.2021.107084.
- Poquérousse, J., Brown, C.L., Gaillard, C., Doughty, C., Dalén, L., Gallagher, A.J., et al. 2024. Assessing contemporary Arctic habitat availability for a woolly mammoth proxy. *Scientific Reports*, **14**: 9804. doi:10.1038/s41598-024-60442-7.
- Post, E. 2013. Erosion of community diversity and stability by herbivore removal under warming. *Proceedings of the Royal Society of London B*, **280**: 20122722.
- Post, E., and Forchhammer, M.C. 2008. Climate change reduces reproductive success of an Arctic herbivore through trophic mismatch. *Philosophical Transactions of the Royal Society B: Biological Sciences*, **363**: 2367–2373. doi:10.1098/rstb.2007.2207.
- Post, E., and Pedersen, C. 2008. Opposing plant community responses to warming with and without herbivores. *Proceedings of the National Academy of Sciences* **105**: 12353–12358. doi:10.1073/pnas.0802421105.
- Post, E., Kaarlejärvi, E., Macias-Fauria, M., Watts, D.A., Sporon Bøving, P., Cahoon, S.M.P., et al. 2023. Large herbivore diversity slows sea ice-associated decline in Arctic tundra diversity. *Science*, **380**: 1282–1287. doi:10.1126/science.add2679. PMID: 37347848.
- Post, E., Pedersen, C., and Watts, D.A. 2022. Large herbivores facilitate the persistence of rare taxa under tundra warming. *Scientific Reports*, **12**. doi:10.1038/s41598-022-05388-4.
- Post, E., Pedersen, C., Wilmers, C.C., and Forchhammer, M.C. 2008. Warming, plant phenology and the spatial dimension of trophic mismatch for large herbivores. *Proceedings of the Royal Society B: Biological Sciences*, **275**: 2005–2013. doi:10.1098/rspb.2008.0463.
- Prevéy, J., Vellend, M., Rüger, N., Hollister, R.D., Bjorkman, A.D., Myers-Smith, I.H., et al. 2017. Greater temperature sensitivity of plant phenology at colder sites: implications for convergence across northern latitudes. *Global Change Biology*, **23**(7): 2660–2671. doi:10.1111/gcb.13619.
- Prichard, A.K., Lawhead, B.E., Lenart, E.A., and Welch, J.H. 2020. Caribou distribution and movements in a Northern Alaska oilfield. *Journal of Wildlife Management*, **84**: 1483–1499. doi:10.2307/27012399.
- Radville, L., Post, E., and Eissenstat, D.M. 2016. Root phenology in an Arctic shrub-graminoid community: the effects of long-term warming and herbivore exclusion. *Climate Change Responses*, **3**. doi:10.1186/s40665-016-0017-0.
- Ramirez, J.I., Sundqvist, M., Lindén, E., Björk, R.G., Forbes, B.C., Suominen, O., et al. 2024. Reindeer grazing reduces climate-driven vegetation changes and shifts trophic interactions in the Fennoscandian tundra. *Oikos*, **2024**. doi:10.1111/oik.10595.
- Rautiainen, H., Alam, M., Blackwell, P.G., and Skarin, A. 2022. Identification of reindeer fine-scale foraging behaviour using tri-axial accelerometer data. *Movement Ecology*, **10**: 40. doi:10.1186/s40462-022-00339-0.
- Ravna, Z.V. 2020. The inter-generational transmission of Indigenous Knowledge by Nenets women: viewed in the context of the state educational system of Russia. Doctoral Thesis, UiT The Arctic University of Norway, Tromsø.
- Ravolainen, V.T., Bräthen, K.A., Ims, R.A., Yoccoz, N.G., Henden, J.-A., and Killengreen, S.T. 2011. Rapid, landscape scale responses in riparian tundra vegetation to exclusion of small and large mammalian herbivores. *Basic and Applied Ecology*, **12**: 643–653. doi:10.1016/j.baae.2011.09.009.
- Ravolainen, V.T., Bräthen, K.A., Yoccoz, N.G., Nguyen, J.K., and Ims, R.A. 2014. Complementary impacts of small rodents and semi-domesticated ungulates limit tall shrub expansion in the tundra. *Journal of Applied Ecology*, **51**: 234–241. doi:10.1111/1365-2664.12180.
- Rheubottom, S.I., Barrio, I.C., Kozlov, M.V., Alatalo, J.M., Andersson, T., Asmus, A.L., et al. 2019. Hiding in the background: community-level patterns in invertebrate herbivory across the tundra biome. *Polar Biology*, **42**: 1881–1897. doi:10.1007/s00300-019-02568-3.
- Riseth, J.Å., Tømmervik, H., Helander-Renvall, E., Labba, N., Johansson, C., Malnes, E., et al. 2011. Sámi traditional ecological knowledge as a guide to science: snow, ice and reindeer pasture facing climate change. *Polar Record*, **47**: 202–217. doi:10.1017/S0032247410000434.
- Rixen, C., Høye, T.T., Macek, P., Aerts, R., Alatalo, J., Andeson, J., et al. 2022. Winters are changing: snow effects on Arctic and alpine tundra ecosystems. *Arctic Science*, **8**: 572–608. doi:10.1139/as-2020-0058.
- Roy, A., Gough, L., Boelman, N.T., Rowe, R.J., Griffin, K.L., and McLaren, J.R. 2022. Small but mighty: impacts of rodent-herbivore structures on carbon and nutrient cycling in arctic tundra. *Functional Ecology*, **36**: 2331–2343. doi:10.1111/1365-2435.14127.
- Ruffino, L., Oksanen, T., Hoset, K.S., Tuomi, M., Oksanen, L., Korpimäki, E., et al. 2016. Predator-rodent-plant interactions along a coast-inland gradient in fennoscandian tundra. *Ecography*, **39**: 871–883. doi:10.1111/ecog.01758.
- Saccone, P., Pyykkonen, T., Eskelinen, A., and Virtanen, R. 2014. Environmental perturbation, grazing pressure and soil wetness jointly drive mountain tundra toward divergent alternative states. *Journal of Ecology*, **102**: 1661–1672. doi:10.1111/1365-2745.12316.
- Salusky, I.R., Kral, M., Amarok, B., and Wexler, L.M. 2022. Navigating between two the worlds of school and 'being on the land': Arctic indigenous young people, structural violence, cultural continuity and self-hood. *Journal of Youth Studies*, **25**: 170–192. doi:10.1080/13676261.2020.1858040.
- Sarkki, S., Johnsen, K.I., Löf, A., Pekkarinen, A.J., Kumpula, J., Rasmus, S., et al. 2022. Governing maximum reindeer numbers in Fennoscandia. *In* Reindeer husbandry and global environmental change: pastoralism in Fennoscandia. Taylor and Francis. pp. 173–187. doi:10.4324/9781003118565-13.
- Savo, V., Lepofsky, D., Benner, J.P., Kohfeld, K.E., Bailey, J., and Lertzman, K. 2016. Observations of climate change among subsistence-oriented

- communities around the world. *Nature Climate Change*, **6**: 462–473. doi:[10.1038/nclimate2958](https://doi.org/10.1038/nclimate2958).
- Schmidt, N.M., Hansen, L.H., and Hansen, J. 2021. BioBasis—conceptual design and sampling procedures of the biological programme of Zackenberg Basic. 24th ed. Roskilde, Denmark. Available from [www.zackenberg.dk](http://www.zackenberg.dk).
- Schmidt, N.M., Hardwick, B., Gilg, O., Høye, T.T., Krogh, P.H., Meltofte, H., et al. 2017. Interaction webs in arctic ecosystems: determinants of arctic change? *Ambio*, **46**: 12–25. doi:[10.1007/s13280-016-0862-x](https://doi.org/10.1007/s13280-016-0862-x).
- Senft, R.L., Coughenour, M.B., Bailey, D.W., Rittenhouse, L.R., Sala, O.E., and Swift, D.M. 1987. Large herbivore foraging and ecological hierarchies. *Bioscience*, **37**: 789–799. doi:[10.2307/1310545](https://doi.org/10.2307/1310545).
- Seru, L.V., Forde, T.L., Roberto-Charron, A., Mavrot, F., Niu, Y.D., and Kutz, S.J. 2024. Genomic characterization and virulence gene profiling of *Erysipelothrix rhusiopathiae* isolated from widespread muskox mortalities in the Canadian Arctic Archipelago. *BMC Genomics*, **25**: 691. doi:[10.1186/s12864-024-10592-9](https://doi.org/10.1186/s12864-024-10592-9).
- Severson, J.P., Vosburgh, T.C., and Johnson, H.E. 2023. Effects of vehicle traffic on space use and road crossings of caribou in the Arctic. *Ecological Applications*, **33**. doi:[10.1002/eap.2923](https://doi.org/10.1002/eap.2923).
- Siewert, M.B., and Olofsson, J. 2021. UAV reveals substantial but heterogeneous effects of herbivores on Arctic vegetation. *Scientific Reports*, **11**. doi:[10.1038/s41598-021-98497-5](https://doi.org/10.1038/s41598-021-98497-5).
- Silver, T., Heiskanen, L., Aurela, M., Myller, K., Karhu, K., Meyer, N., et al. 2020. Insect herbivory dampens subarctic birch forest C sink response to warming. *Nature Communications*, **11**. doi:[10.1038/s41467-020-16404-4](https://doi.org/10.1038/s41467-020-16404-4).
- Simba, L.D., te Beest, M., Hawkins, H.J., Larson, K.W., Palmer, A.R., Sandström, C., et al. 2024. Wilder rangelands as a natural climate opportunity: linking climate action to biodiversity conservation and social transformation. *Ambio*, **53**: 678–696. doi:[10.1007/s13280-023-01976-4](https://doi.org/10.1007/s13280-023-01976-4).
- Skarin, A., and Åhman, B. 2014. Do human activity and infrastructure disturb domesticated reindeer? The need for the reindeer's perspective. *Polar Biology*, **37**: 1041–1054. doi:[10.1007/s00300-014-1499-5](https://doi.org/10.1007/s00300-014-1499-5).
- Skarin, A., Sandström, P., and Alam, M. 2018. Out of sight of wind turbines—reindeer response to wind farms in operation. *Ecology and Evolution*, **8**: 9906–9919. doi:[10.1002/ece3.4476](https://doi.org/10.1002/ece3.4476).
- Soininen, E.M., and Neby, M. 2024. Small rodent population cycles and plants—after 70 years, where do we go? *Biological Reviews*, **99**: 265–294. doi:[10.1111/brv.13021](https://doi.org/10.1111/brv.13021).
- Soininen, E.M., Barrio, I.C., Bjørnkås, R., Bjørnsdóttir, K., Ehrlich, D., Hoping, K., et al. 2021. Location of studies and evidence of effects of herbivory on Arctic vegetation: a systematic map. *Environmental Evidence*, **10**: 25. doi:[10.1186/s13750-021-00240-0](https://doi.org/10.1186/s13750-021-00240-0).
- Soininen, E.M., Gauthier, G., Bilodeau, F., Berteaux, D., Gielly, L., and Taberlet, P. 2015. Highly overlapping winter diet in two sympatric lemming species revealed by DNA metabarcoding. *PLoS ONE*, **10**: e0115335. doi:[10.1371/journal.pone.0115335](https://doi.org/10.1371/journal.pone.0115335).
- Soininen, E.M., Henden, J.A., Ravolainen, V.T., Yoccoz, N.G., Bråthen, K.A., Killengreen, S.T., and Ims, R.A. 2018. Transferability of biotic interactions: temporal consistency of arctic plant–rodent relationships is poor. *Ecology and Evolution*, **8**(19): 9697–9711. doi:[10.1002/ece3.4399](https://doi.org/10.1002/ece3.4399).
- Soininen, E.M., Valentini, A., Coissac, E., Miquel, C., Gielly, L., Brochmann, C., et al. 2009. Analysing diet of small herbivores: the efficiency of DNA barcoding coupled with high-throughput pyrosequencing for deciphering the composition of complex plant mixtures. *Frontiers in Zoology*, **6**: 16–25. doi:[10.1186/1742-9994-6-16](https://doi.org/10.1186/1742-9994-6-16).
- Sokolova, N.A., Fufachev, I.A., Ehrlich, D., Shtro, V.G., Sokolov, V.A., and Sokolov, A.A. 2024. Expansion of voles and retraction of lemmings over 60 years along a latitudinal gradient on Yamal Peninsula. *Global Change Biology*, **30**. doi:[10.1111/gcb.17161](https://doi.org/10.1111/gcb.17161).
- Speed, J.D.M., Austrheim, G., Kolstad, A.L., and Solberg, E.J. 2019a. Long-term changes in northern large-herbivore communities reveal differential rewinding rates in space and time. *PLoS ONE*, **14**: e0217166. doi:[10.1371/journal.pone.0217166](https://doi.org/10.1371/journal.pone.0217166).
- Speed, J.D.M., Skjelbred, I.Å., Barrio, I.C., Martin, M.D., Berteaux, D., Bueno, C.G., et al. 2019b. Trophic interactions and abiotic factors drive functional and phylogenetic structure of vertebrate herbivore communities across the Arctic tundra biome. *Ecography*, **42**: 1152–1163. doi:[10.1111/ecog.04347](https://doi.org/10.1111/ecog.04347).
- Speed, J.D.M., Chimal, J.A.B., Martin, M.D., Barrio, I.C., Vuorinen, K.E.M., and Soininen, E.M. 2021. Will borealization of Arctic tundra herbivore communities be driven by climate warming or vegetation change? *Global Change Biology*, **27**: 6568–6577. doi:[10.1111/gcb.15910](https://doi.org/10.1111/gcb.15910).
- Spiegel, M.P., Volkovskiy, A., Terekhina, A., Forbes, B.C., Park, T., and Macias-Fauria, M. 2023. Top-down regulation by a reindeer herding system limits climate-driven arctic vegetation change at a regional scale. *Earth's Future*, **11**. doi:[10.1029/2022EF003407](https://doi.org/10.1029/2022EF003407).
- Stark, S., Horstkotte, T., Kumpula, J., Olofsson, J., Tømmervik, H., and Turunen, M. 2023. The ecosystem effects of reindeer (*Rangifer tarandus*) in northern Fennoscandia: past, present and future. *Perspectives in Plant Ecology, Evolution and Systematics*, **58**: 125716. doi:[10.1016/j.ppees.2022.125716](https://doi.org/10.1016/j.ppees.2022.125716).
- Stark, S., Strømmer, R., and Tuomi, J. 2002. Reindeer grazing and soil microbial processes in two suboceanic and two subcontinental tundra heaths. *Oikos*, **97**: 69–78. doi:[10.1034/j.1600-0706.2002.970107.x](https://doi.org/10.1034/j.1600-0706.2002.970107.x).
- Stoessel, M., Moen, J., and Lindborg, R. 2022. Mapping cumulative pressures on the grazing lands of northern Fennoscandia. *Scientific Reports*, **12**. doi:[10.1038/s41598-022-20095-w](https://doi.org/10.1038/s41598-022-20095-w).
- Sturm, M., McFadden, J.P., Liston, G.E., Chapin, S.F., III, Racine, C.H., and Holmgren, J. 2001a. Snow-shrub interactions in Arctic tundra: a hypothesis with climatic implications. *Journal of Climate*, **14**: 336–344.
- Sturm, M., Racine, C., and Tape, K. 2001b. Increasing shrub abundance in the Arctic. *Nature*, **411**: 546–547. doi:[10.1038/35079180](https://doi.org/10.1038/35079180).
- Sundqvist, M.K., Moen, J., Björk, R.G., Vowles, T., Kytöviita, M.M., Parsons, M.A., and Olofsson, J. 2019. Experimental evidence of the long-term effects of reindeer on Arctic vegetation greenness and species richness at a larger landscape scale. *Journal of Ecology*, **107**: 2724–2736. doi:[10.1111/1365-2745.13201](https://doi.org/10.1111/1365-2745.13201).
- Sutherland, W.J., and Woodroof, H.J. 2009. The need for environmental horizon scanning. *Trends in Ecology & Evolution*, **24**: 523–527. doi:[10.1016/j.tree.2009.04.008](https://doi.org/10.1016/j.tree.2009.04.008).
- Sutherland, W.J., Bennett, C., Brotherton, P.N.M., Butterworth, H.M., Clout, M.N., Côté, I.M., et al. 2023. A global biological conservation horizon scan of issues for 2023. *Trends in Ecology & Evolution*, **38**: 96–107. doi:[10.1016/j.tree.2022.10.005](https://doi.org/10.1016/j.tree.2022.10.005).
- Sutherland, W.J., Fleishman, E., Mascia, M.B., Pretty, J., and Rudd, M.A. 2011. Methods for collaboratively identifying research priorities and emerging issues in science and policy. *Methods in Ecology and Evolution*, **2**: 238–247. doi:[10.1111/j.2041-210X.2010.00083.x](https://doi.org/10.1111/j.2041-210X.2010.00083.x).
- Svenning, J.-C., Lemoine, R.T., Bergman, J., Buitenwerf, R., Le Roux, E., Lundgren, E., et al. 2024. The late-Quaternary megafauna extinctions: patterns, causes, ecological consequences and implications for ecosystem management in the anthropocene. *Cambridge Prisms: Extinction*, **2**: e5. doi:[10.1017/ext.2024.4](https://doi.org/10.1017/ext.2024.4).
- Tape, K.D., Gustine, D.D., Ruess, R.W., Adams, L.G., and Clark, J.A. 2016. Range expansion of moose in arctic Alaska linked to warming and increased shrub habitat. *PLoS ONE*, e0152636, **11**. doi:[10.1371/journal.pone.0152636](https://doi.org/10.1371/journal.pone.0152636).
- Tape, K.D., Jones, B.M., Arp, C.D., Nitze, I., and Grosse, G. 2018. Tundra be dammed: beaver colonization of the Arctic. *Global Change Biology*, **24**: 4478–4488. doi:[10.1111/gcb.14332](https://doi.org/10.1111/gcb.14332).
- Te Beest, M., Sitters, J., Ménard, C.B., and Olofsson, J. 2016. Reindeer grazing increases summer albedo by reducing shrub abundance in Arctic tundra. *Environmental Research Letters*, **11**: 125013. doi:[10.1088/1748-9326/aa5128](https://doi.org/10.1088/1748-9326/aa5128).
- Thompson, D.P., and Barboza, P.S. 2014. Nutritional implications of increased shrub cover for caribou (*Rangifer tarandus*) in the Arctic. *Canadian Journal of Zoology*, **92**: 339–351. doi:[10.1139/cjz-2013-0265](https://doi.org/10.1139/cjz-2013-0265).
- Trouwborst, A., Fleurke, F., and Dubrulle, J. 2016. Border fences and their impacts on large carnivores, large herbivores and biodiversity: an international wildlife law perspective. *Review of European, Comparative & International Environmental Law*, **25**: 291–306. doi:[10.1111/reel.12169](https://doi.org/10.1111/reel.12169).
- Tryland, M., Nymo, I.H., Sánchez Romano, J., Mørk, T., Klein, J., and Rockström, U. 2019. Infectious disease outbreak associated with supplementary feeding of semi-domesticated reindeer. *Frontiers in Veterinary Science*, **6**. doi:[10.3389/fvets.2019.00126](https://doi.org/10.3389/fvets.2019.00126).
- Tsuji, L.J.S., Tsuji, S.R.J., Zuk, A.M., Davey, R., and Liberda, E.N. 2020. Harvest programs in first nations of subarctic Canada: the benefits go beyond addressing food security and environmental sustainability

- issues. *International Journal of Environmental Research and Public Health*, **17**: 1–24. doi:[10.3390/ijerph17218113](https://doi.org/10.3390/ijerph17218113).
- Tuia, D., Kellenberger, B., Beery, S., Costelloe, B.R., Zuffi, S., Risse, B., et al. 2022. Perspectives in machine learning for wildlife conservation. *Nature Communications*, **13**: 792. doi:[10.1038/s41467-022-27980-y](https://doi.org/10.1038/s41467-022-27980-y).
- Tuomi, M.W., Murguzur, F.J.A., Hoset, K.S., Soininen, E.M., Vesterinen, E.J., Utsi, T.A., et al. 2023. Novel frontier in wildlife monitoring: identification of small rodent species from fecal pellets using near-infrared reflectance spectroscopy (NIRS). *Ecology and Evolution*, **13**: e9857. doi:[10.1002/ece3.9857](https://doi.org/10.1002/ece3.9857).
- Tylianakis, J.M., and Morris, R.J. 2017. Ecological networks across environmental gradients. *Annual Review of Ecology, Evolution, and Systematics*, **48**: 25–48. doi:[10.1146/annurev-ecolsys-110316-022821](https://doi.org/10.1146/annurev-ecolsys-110316-022821).
- Uböni, A., Åhman, B., and Moen, J. 2020. Can management buffer pasture loss and fragmentation for Sami reindeer herding in Sweden? *Pastoralism*, **10**. doi:[10.1186/s13570-020-00177-y](https://doi.org/10.1186/s13570-020-00177-y).
- Uböni, A., Horstkotte, T., Kaarlejärvi, E., Sévêque, A., Stammer, F., Olofsson, J., et al. 2016. Long-term trends and role of climate in the population dynamics of Eurasian reindeer. *PLoS ONE*, **11**: e0158359. doi:[10.1371/journal.pone.0158359](https://doi.org/10.1371/journal.pone.0158359).
- Ukrainitseva, V.V. 1981. Vegetation of warm late Pleistocene intervals and the extinction of some large herbivorous mammals. *Polar Geography and Geology*, **5**: 189–203. doi:[10.1080/10889378109388689](https://doi.org/10.1080/10889378109388689).
- Underwood, A.J. 1998. Relationships between ecological research and environmental management. *Landscape and Urban Planning*, **40**: 123–130. doi:[10.1016/S0169-2046\(97\)00104-7](https://doi.org/10.1016/S0169-2046(97)00104-7).
- Väisänen, M., Yläne, H., Kaarlejärvi, E., Sjögersten, S., Olofsson, J., Crout, N., and Stark, S. 2014. Consequences of warming on tundra carbon balance determined by reindeer grazing history. *Nature Climate Change*, **4**: 384–388. doi:[10.1038/nclimate2147](https://doi.org/10.1038/nclimate2147).
- van Beest, F.M., Beumer, L.T., Andersen, A.S., Hansson, S.V., and Schmidt, N.M. 2021. Rapid shifts in Arctic tundra species' distributions and inter-specific range overlap under future climate change. *Diversity and Distributions*, **27**: 1706–1718. doi:[10.1111/ddi.13362](https://doi.org/10.1111/ddi.13362).
- van Beest, F.M., López-Blanco, E., Hansen, L.H., and Schmidt, N.M. 2023. Extreme shifts in habitat suitability under contemporary climate change for a high-Arctic herbivore. *Climatic Change*, **176**: 31. doi:[10.1007/s10584-023-03510-7](https://doi.org/10.1007/s10584-023-03510-7).
- Van der Wal, R. 2006. Do herbivores cause habitat degradation or vegetation state transition? Evidence from the tundra. *Oikos*, **114**: 177–186. doi:[10.1111/j.2006.0030-1299.14264.x](https://doi.org/10.1111/j.2006.0030-1299.14264.x).
- Van der Wal, R., and Brooker, R.W. 2004. Mosses mediate grazer impacts on grass abundance in arctic ecosystems. *Functional Ecology*, **18**: 77–86.
- Verma, M., Schulte to Bühne, H., Lopes, M., Ehrlich, D., Sokovnina, S., Hofhuis, S.P., and Pettolelli, N. 2020. Can reindeer husbandry management slow down the shrubification of the Arctic? *Journal of Environmental Management*, **267**: 110636. doi:[10.1016/j.jenvman.2020.110636](https://doi.org/10.1016/j.jenvman.2020.110636).
- Villoslada, M., Berner, L.T., Juutinen, S., Yläne, H., and Kumpula, T. 2024. Upscaling vascular aboveground biomass and topsoil moisture of subarctic fens from unoccupied aerial vehicles (UAVs) to satellite level. *Science of the Total Environment*, **933**: 173049. doi:[10.1016/j.scitotenv.2024.173049](https://doi.org/10.1016/j.scitotenv.2024.173049).
- Villoslada, M., Yläne, H., Juutinen, S., Kolari, T.H.M., Korpelainen, P., Tahvanainen, T., et al. 2023. Reindeer control over shrubification in subarctic wetlands: spatial analysis based on unoccupied aerial vehicle imagery. *Remote Sensing in Ecology and Conservation*, **9**: 687–706. doi:[10.1002/rse2.337](https://doi.org/10.1002/rse2.337).
- Vindstad, O.P.L., Jepsen, J.U., Ek, M., Pepi, A., and Ims, R.A. 2019. Can novel pest outbreaks drive ecosystem transitions in northern-boreal birch forest? *Journal of Ecology*, **107**: 1141–1153. doi:[10.1111/1365-2745.13093](https://doi.org/10.1111/1365-2745.13093).
- Virtanen, R., Clark, A.T., den Herder, M., and Roininen, H. 2021. Dynamic effects of insect herbivory and climate on tundra shrub growth: roles of browsing and ramet age. *Journal of Ecology*, **109**: 1250–1262. doi:[10.1111/1365-2745.13551](https://doi.org/10.1111/1365-2745.13551).
- Virtanen, R., Oksanen, L., Oksanen, T., Cohen, J., Forbes, B.C., Johansen, B., et al. 2016. Where do the treeless tundra areas of northern highlands fit in the global biome system: toward an ecologically natural subdivision of the tundra biome. *Ecology and Evolution*, **6**: 143–158. doi:[10.1002/ece3.1837](https://doi.org/10.1002/ece3.1837).
- Voldstad, L.H., Alsos, I.G., Farnsworth, W.R., Heintzman, P.D., Håkansson, L., Kjellman, S.E., et al. 2020. A complete Holocene lake sediment ancient DNA record reveals long-standing high Arctic plant diversity hotspot in northern Svalbard. *Quaternary Science Reviews*, **234**: 106207. doi:[10.1016/j.quascirev.2020.106207](https://doi.org/10.1016/j.quascirev.2020.106207).
- Vowles, T., and Björk, R.G. 2019. Implications of evergreen shrub expansion in the Arctic. *Journal of Ecology*, **107**: 650–655. doi:[10.1111/1365-2745.13081](https://doi.org/10.1111/1365-2745.13081).
- Vuojala-Magga, T., and Turunen, M.T. 2015. Sámi reindeer herders' perspective on herbivory of subarctic mountain birch forests by geometrid moths and reindeer: a case study from northernmost Finland. *Springerplus*, **4**: 1–13. doi:[10.1186/s40064-015-0921-y](https://doi.org/10.1186/s40064-015-0921-y).
- Vuorinen, K., Austrheim, G., Tremblay, J.-P., Myers-Smith, I.H., Hortman, H.L., Frank, P., et al. 2022. Growth rings show limited evidence for ungulates' potential to suppress shrubs across the Arctic. *Environmental Research Letters*, **17**: 034013. doi:[10.1088/1748-9326/ac5207](https://doi.org/10.1088/1748-9326/ac5207).
- Wang, Y., Pedersen, M.W., Alsos, I.G., De Sanctis, B., Racimo, F., Prohaska, A., et al. 2021. Late quaternary dynamics of Arctic biota from ancient environmental genomics. *Nature*, **600**: 86–92. doi:[10.1038/s41586-021-04016-x](https://doi.org/10.1038/s41586-021-04016-x).
- Wang, Z., Jiang, Y., Diallo, A.B., and Kembel, S.W. 2024. Deep learning- and image processing-based methods for automatic estimation of leaf herbivore damage. *Methods in Ecology and Evolution*, **15**: 732–743. doi:[10.1111/2041-210X.14293](https://doi.org/10.1111/2041-210X.14293).
- Wartier, D.W., Landry-Cuerrier, M., and Humphries, M.M. 2021. Valuation of country food in Nunavut based on energy and protein replacement. *Arctic*, **74**: 355–371. doi:[10.14430/arctic73390](https://doi.org/10.14430/arctic73390).
- Watkinson, A.D., Virgl, J., Miller, V.S., Naeth, M.A., Kim, J., Serben, K., et al. 2021. Effects of dust deposition from diamond mining on subarctic plant communities and barren-ground caribou forage. *Journal of Environmental Quality*, **50**: 990–1003. doi:[10.1002/jeq2.20251](https://doi.org/10.1002/jeq2.20251).
- Wheeler, H.C., Chipperfield, J.D., Roland, C., and Svenning, J.-C. 2015. How will the greening of the Arctic affect an important prey species and disturbance agent? Vegetation effects on arctic ground squirrels. *Oecologia*, **178**, 915–929. doi:[10.1007/s00442-015-3240-7](https://doi.org/10.1007/s00442-015-3240-7).
- Wheeler, H.C., Danielsen, F., Fidel, M., Hausner, V., Horstkotte, T., Johnson, N., et al. 2020. The need for transformative changes in the use of Indigenous knowledge along with science for environmental decision-making in the Arctic. *People and Nature*, **2**: 544–556. doi:[10.1002/pan3.10131](https://doi.org/10.1002/pan3.10131).
- Willerslev, E., Davison, J., Moora, M., Zobel, M., Coissac, E., Edwards, M.E., et al. 2014. Fifty thousand years of Arctic vegetation and megafaunal diet. *Nature*, **506**: 47–51. doi:[10.1038/nature12921](https://doi.org/10.1038/nature12921).
- Windirsch-Woiwode, T. 2024. Permafrost carbon stabilisation by recreating a herbivore-driven ecosystem. PhD dissertation, Universität Potsdam. doi:[10.25932/publishup-62424](https://doi.org/10.25932/publishup-62424).
- Windirsch, T., Grosse, G., Ulrich, M., Forbes, B.C., Göckede, M., Wolter, J., et al. 2022. Large herbivores on permafrost—a pilot study of grazing impacts on permafrost soil carbon storage in northeastern Siberia. *Frontiers in Environmental Science*, **10**. doi:[10.3389/fenvs.2022.893478](https://doi.org/10.3389/fenvs.2022.893478).
- Winkler, J., and Moser, R. 2016. Biases in future-oriented Delphi studies: a cognitive perspective. *Technological Forecasting and Social Change*, **105**: 63–76. doi:[10.1016/j.techfore.2016.01.021](https://doi.org/10.1016/j.techfore.2016.01.021).
- Wintle, B.C., Kennicutt, M.C., II, and Sutherland, W.J. 2020. Scanning horizons in research, policy and practice. *In Conservation research, policy and practice*. Cambridge University Press. pp. 29–47. doi:[10.1017/9781108638210.003](https://doi.org/10.1017/9781108638210.003).
- Wirta, H., Vesterinen, E., Hambäck, P., Weingartner, E., Rasmussen, C., Reneerkens, J., et al. 2015. Exposing the structure of an Arctic food web. *Ecology and Evolution*, **5**(16): 3842–3856. doi:[10.1002/ece3.1647](https://doi.org/10.1002/ece3.1647).
- Yarzabal, L.A., Salazar, L.M.B., and Batista-García, R.A. 2021. Climate change, melting cryosphere and frozen pathogens: should we worry...? *Environmental Sustainability*, **4**: 489–501. doi:[10.1007/s42398-021-00184-8](https://doi.org/10.1007/s42398-021-00184-8).
- Yläne, H., and Stark, S. 2025. Can large animals direct the fate of the vast Arctic soil carbon reserves—a review. *Environmental Research Communications*, **7**: 022004. doi:[10.1088/2515-7620/adb7be](https://doi.org/10.1088/2515-7620/adb7be).
- Yläne, H., Kaarlejärvi, E., Väisänen, M., Männistö, M.K., Ahonen, S.H.K., Olofsson, J., and Stark, S. 2020. Removal of grazers alters the response of tundra soil carbon to warming and enhanced nitrogen availability. *Ecological Monographs*, **90**. doi:[10.1002/ecm.1396](https://doi.org/10.1002/ecm.1396).

- Ylänne, H., Madsen, R.L., Castaño, C., Metcalfe, D.B., and Clemmensen, K.E. 2021. Reindeer control over subarctic treeline alters soil fungal communities with potential consequences for soil carbon storage. *Global Change Biology*, **27**: 4254–4268. doi:[10.1111/gcb.15722](https://doi.org/10.1111/gcb.15722).
- Ylänne, H., Stark, S., and Tolvanen, A. 2015. Vegetation shift from deciduous to evergreen dwarf shrubs in response to selective herbivory offsets carbon losses: evidence from 19 years of warming and simulated herbivory in the subarctic tundra. *Global Change Biology*, **21**: 3696–3711. doi:[10.1111/gcb.12964](https://doi.org/10.1111/gcb.12964).
- Yua, E., Raymond-Yakoubian, J., Daniel, R.A., and Behe, C. 2022. A framework for co-production of knowledge in the context of Arctic research. *Ecology and Society*, **27**: art34. doi:[10.5751/ES-12960-270134](https://doi.org/10.5751/ES-12960-270134).
- Zhou, J., Tape, K.D., Prugh, L., Kofinas, G., Carroll, G., and Kielland, K. 2020. Enhanced shrub growth in the Arctic increases habitat connectivity for browsing herbivores. *Global Change Biology*, **26**: 3809–3820. doi:[10.1111/gcb.15104](https://doi.org/10.1111/gcb.15104).
- Zhu, D., Ciais, P., Chang, J., Krinner, G., Peng, S., Viogy, N., et al. 2018. The large mean body size of mammalian herbivores explains the productivity paradox during the Last Glacial Maximum. *Nature Ecology & Evolution*, **2**: 640–649. doi:[10.1038/s41559-018-0481-y](https://doi.org/10.1038/s41559-018-0481-y).
- Zimov, S.A., Chuprynin, V.I., Oreshko, A.P., Chapin, F.S., III, Reynolds, J.F., and Chapin, M. 1995. Steppe-tundra transition: a herbivore-driven biome shift at the end of the Pleistocene. *The American Naturalist*, **146**: 765–794. doi:[10.1086/285824](https://doi.org/10.1086/285824).
- Zimov, S.A., Zimov, N., Tikhonov, A.N., and Chapin, F.S. 2012. Mammoth steppe: a high-productivity phenomenon. *Quaternary Science Reviews*, **57**: 26–45. doi:[10.1016/j.quascirev.2012.10.005](https://doi.org/10.1016/j.quascirev.2012.10.005).